

2250

Instrument:		2250
Application:		BZ7223 Version 2.1
Start Time:		03/28/2008 16:48:43
End Time:		03/28/2008 17:18:58
Elapsed Time:		00:30:15
Bandwidth:		1/3-octave
Max Input Level:		140.96

	Time	Frequency
Broadband (excl. Peak):	FSI	AZ
Broadband Peak:		A
Spectrum:	FS	A

Instrument Serial Number:		2559224
Microphone Serial Number:		2556234
Input:		Top Socket
Windscreen Correction:		UA-1650
Sound Field Correction:		Diffuse-field

Calibration Time:		03/28/2008 16:48:01
Calibration Type:		External reference
Sensitivity:		49.90 mV/Pa

p1d

	Start time	End time	Elapsed time	Overload [%]	LAeq [dB]	LAFmax [dB]	LAFmin [dB]	LAeq [dB]	LAeq-LAeq [dB]
Value				0,00	60,6	88,7	42,2	64,9	4,3
Time	16:48:43	17:18:58	0:30:15						
Date	28-03-2008	28-03-2008							

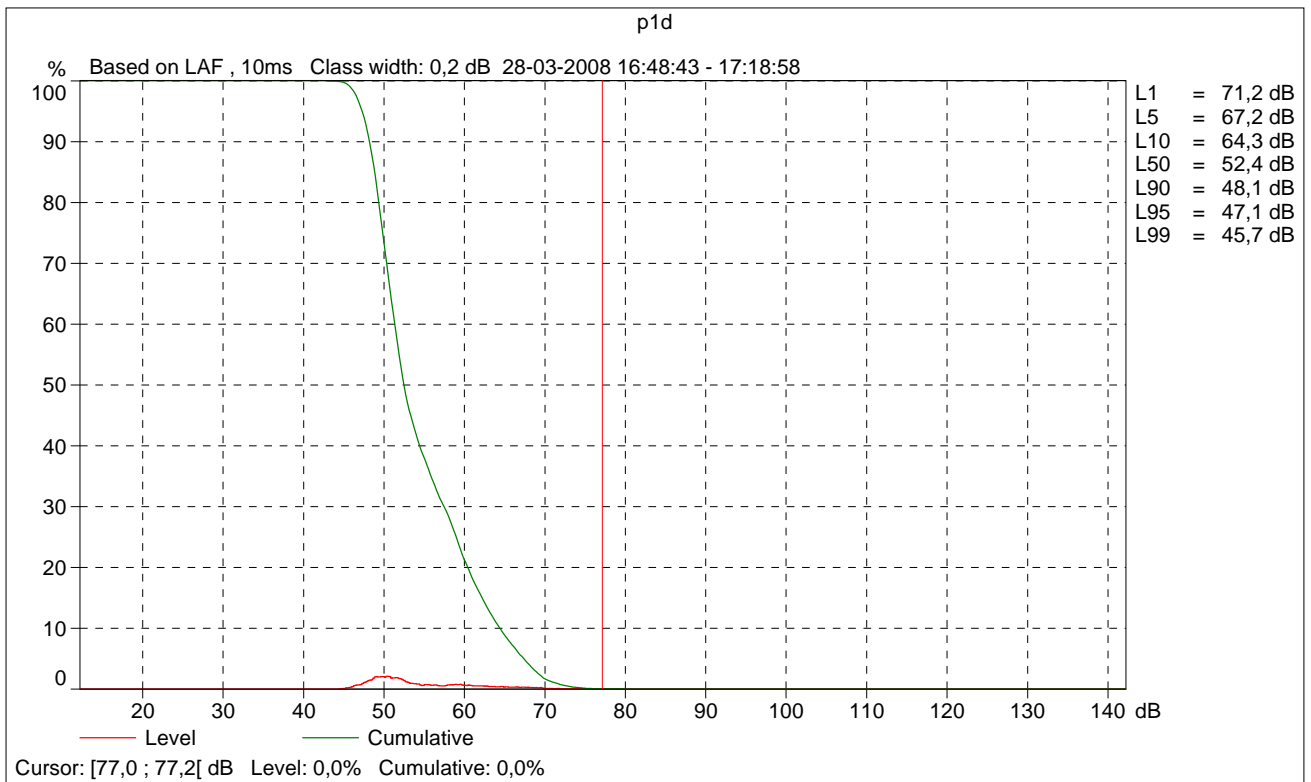
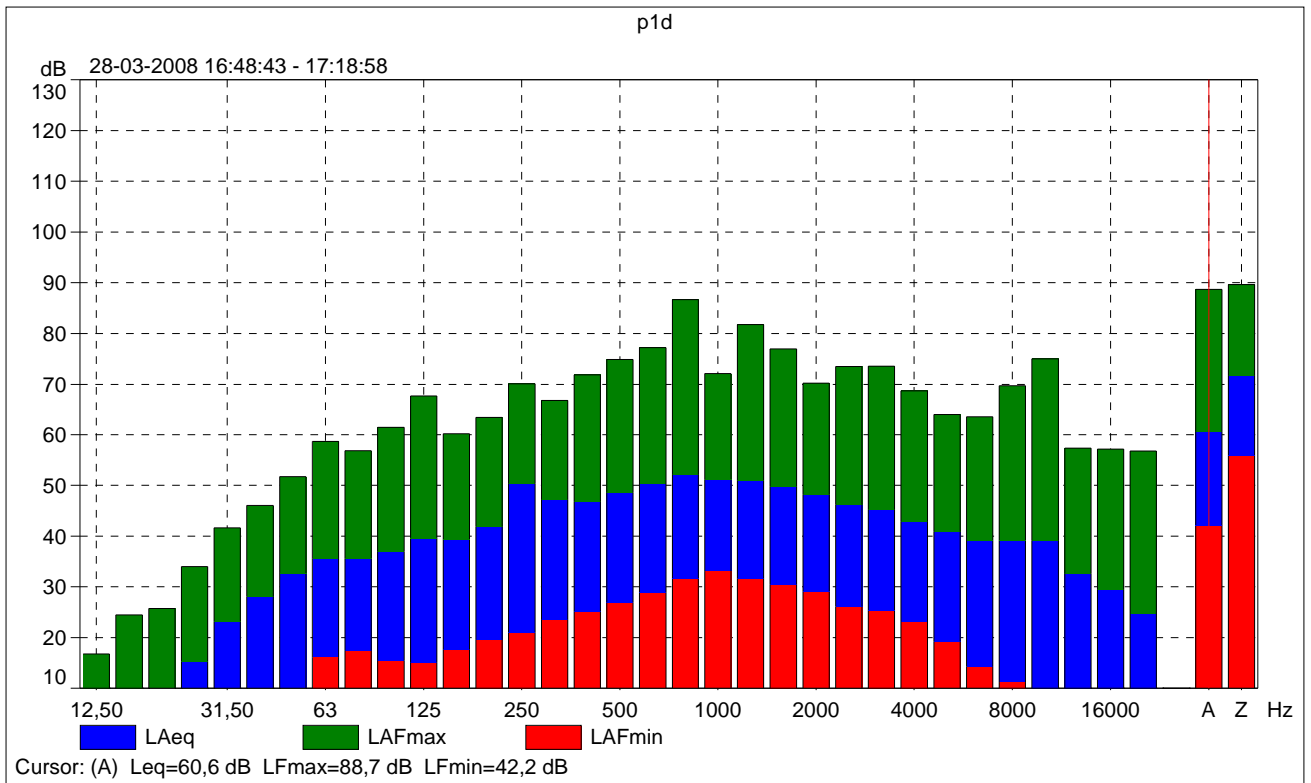
	LApeak [dB]	LAF50 [dB]	LAeq 12,5Hz [dB]	LAeq 16Hz [dB]	LAeq 20Hz [dB]	LAeq 25Hz [dB]	LAeq 31,5Hz [dB]	LAeq 40Hz [dB]
Value	100,2	52,4	-5,7	2,3	7,3	15,3	23,2	28,0
Time	17:03:01							
Date	28-03-2008							

	LAeq 50Hz [dB]	LAeq 63Hz [dB]	LAeq 80Hz [dB]	LAeq 100Hz [dB]	LAeq 125Hz [dB]	LAeq 160Hz [dB]	LAeq 200Hz [dB]	LAeq 250Hz [dB]
Value	32,7	35,5	35,6	36,9	39,7	39,4	41,8	50,3
Time								
Date								

	LAeq 315Hz [dB]	LAeq 400Hz [dB]	LAeq 500Hz [dB]	LAeq 630Hz [dB]	LAeq 800Hz [dB]	LAeq 1kHz [dB]	LAeq 1,25kHz [dB]
Value	47,1	46,8	48,5	50,3	52,1	51,2	50,9
Time							
Date							

	LAeq 1,6kHz [dB]	LAeq 2kHz [dB]	LAeq 2,5kHz [dB]	LAeq 3,15kHz [dB]	LAeq 4kHz [dB]	LAeq 5kHz [dB]	LAeq 6,3kHz [dB]
Value	49,7	48,1	46,2	45,2	42,8	40,9	39,2
Time							
Date							

	LAeq 8kHz [dB]	LAeq 10kHz [dB]	LAeq 12,5kHz [dB]	LAeq 16kHz [dB]	LAeq 20kHz [dB]
Value	39,2	39,1	32,6	29,5	24,7
Time					
Date					



2250

Instrument:		2250
Application:		BZ7223 Version 2.1
Start Time:		03/28/2008 22:22:30
End Time:		03/28/2008 22:52:39
Elapsed Time:		00:30:09
Bandwidth:		1/3-octave
Max Input Level:		140.96

	Time	Frequency
Broadband (excl. Peak):	FSI	AZ
Broadband Peak:		A
Spectrum:	FS	A

Instrument Serial Number:		2559224
Microphone Serial Number:		2556234
Input:		Top Socket
Windscreen Correction:		UA-1650
Sound Field Correction:		Diffuse-field

Calibration Time:		03/28/2008 20:03:38
Calibration Type:		External reference
Sensitivity:		49.93 mV/Pa

p1e

	Start time	End time	Elapsed time	Overload [%]	LAeq [dB]	LAFmax [dB]	LAFmin [dB]	LAeq [dB]	LAeq-LAeq [dB]
Value				0,00	49,5	78,2	33,2	54,2	4,8
Time	22:22:30	22:52:39	0:30:09						
Date	28-03-2008	28-03-2008							

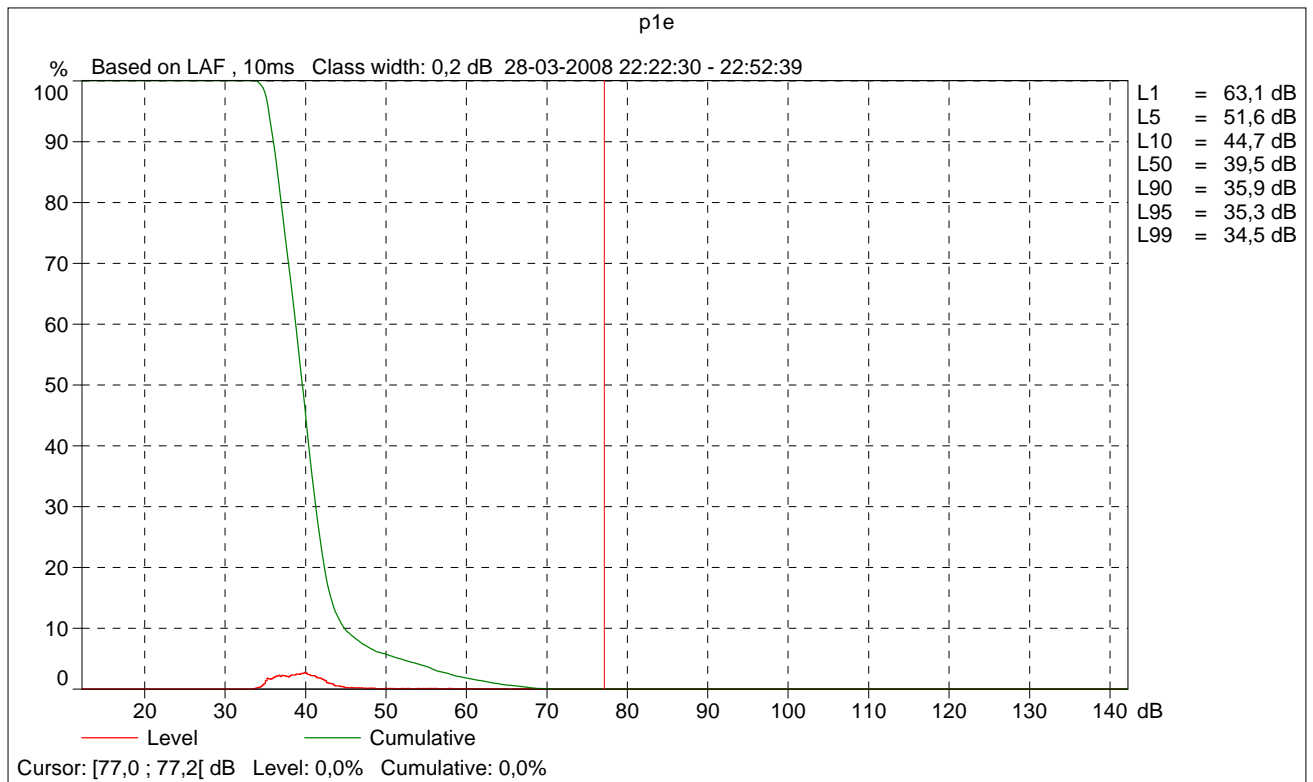
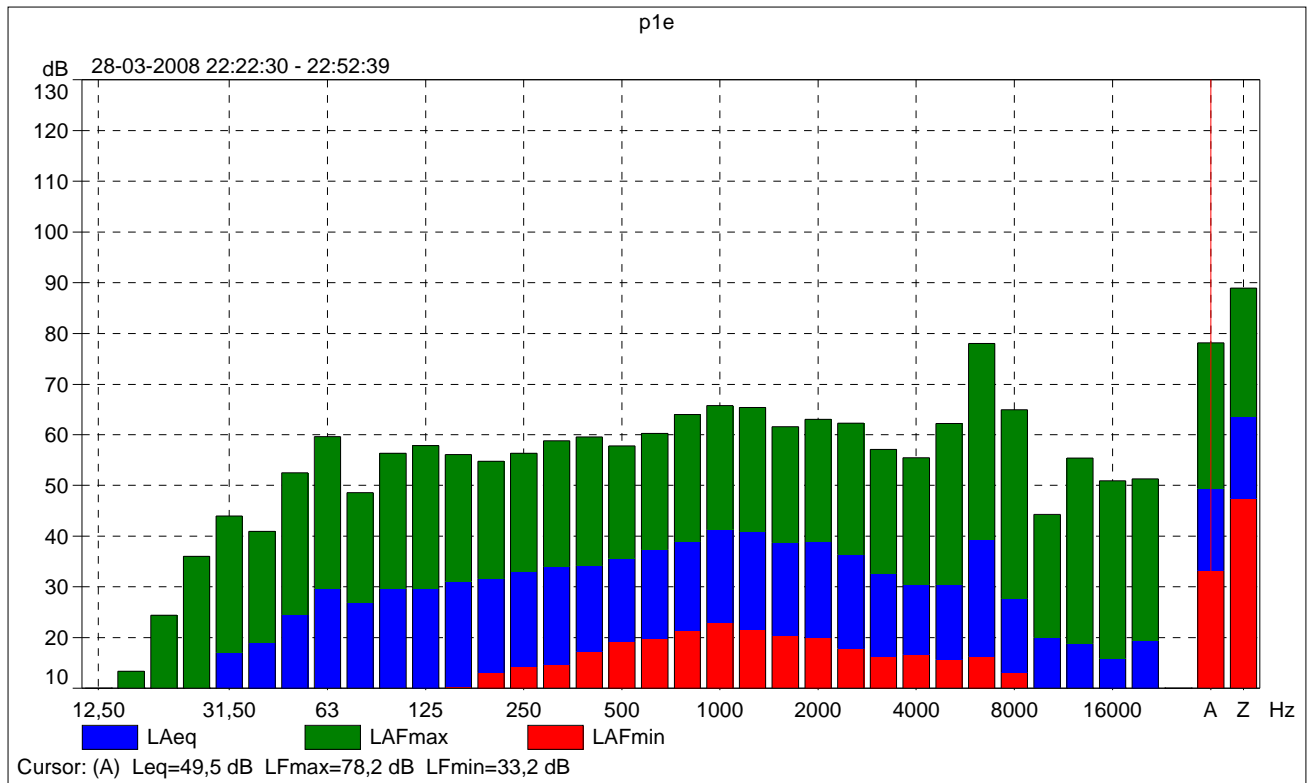
	LApeak [dB]	LAF50 [dB]	LAeq 12,5Hz [dB]	LAeq 16Hz [dB]	LAeq 20Hz [dB]	LAeq 25Hz [dB]	LAeq 31,5Hz [dB]	LAeq 40Hz [dB]
Value	91,7	39,5	-17,3	-7,8	-1,6	7,5	17,0	18,9
Time	22:22:32							
Date	28-03-2008							

	LAeq 50Hz [dB]	LAeq 63Hz [dB]	LAeq 80Hz [dB]	LAeq 100Hz [dB]	LAeq 125Hz [dB]	LAeq 160Hz [dB]	LAeq 200Hz [dB]	LAeq 250Hz [dB]
Value	24,5	29,7	26,8	29,7	29,6	31,1	31,6	32,9
Time								
Date								

	LAeq 315Hz [dB]	LAeq 400Hz [dB]	LAeq 500Hz [dB]	LAeq 630Hz [dB]	LAeq 800Hz [dB]	LAeq 1kHz [dB]	LAeq 1,25kHz [dB]
Value	34,0	34,2	35,7	37,3	38,9	41,4	40,9
Time							
Date							

	LAeq 1,6kHz [dB]	LAeq 2kHz [dB]	LAeq 2,5kHz [dB]	LAeq 3,15kHz [dB]	LAeq 4kHz [dB]	LAeq 5kHz [dB]	LAeq 6,3kHz [dB]
Value	38,7	38,8	36,3	32,6	30,5	30,5	39,2
Time							
Date							

	LAeq 8kHz [dB]	LAeq 10kHz [dB]	LAeq 12,5kHz [dB]	LAeq 16kHz [dB]	LAeq 20kHz [dB]
Value	27,7	20,0	18,9	15,9	19,5
Time					
Date					



2250

Instrument:		2250
Application:		BZ7223 Version 2.1
Start Time:		03/29/2008 02:22:37
End Time:		03/29/2008 02:54:11
Elapsed Time:		00:31:19
Bandwidth:		1/3-octave
Max Input Level:		140.92

	Time	Frequency
Broadband (excl. Peak):	FSI	AZ
Broadband Peak:		A
Spectrum:	FS	A

Instrument Serial Number:		2559224
Microphone Serial Number:		2556234
Input:		Top Socket
Windscreen Correction:		UA-1650
Sound Field Correction:		Diffuse-field

Calibration Time:		03/29/2008 02:22:17
Calibration Type:		External reference
Sensitivity:		50.14 mV/Pa

p1n

	Start time	End time	Elapsed time	Overload [%]	LAeq [dB]	LAFmax [dB]	LAFmin [dB]	LAeq [dB]	LAeq-LAeq [dB]
Value				0,00	51,1	79,8	35,7	53,6	2,6
Time	02:22:37	02:54:11	0:31:19						
Date	29-03-2008	29-03-2008							

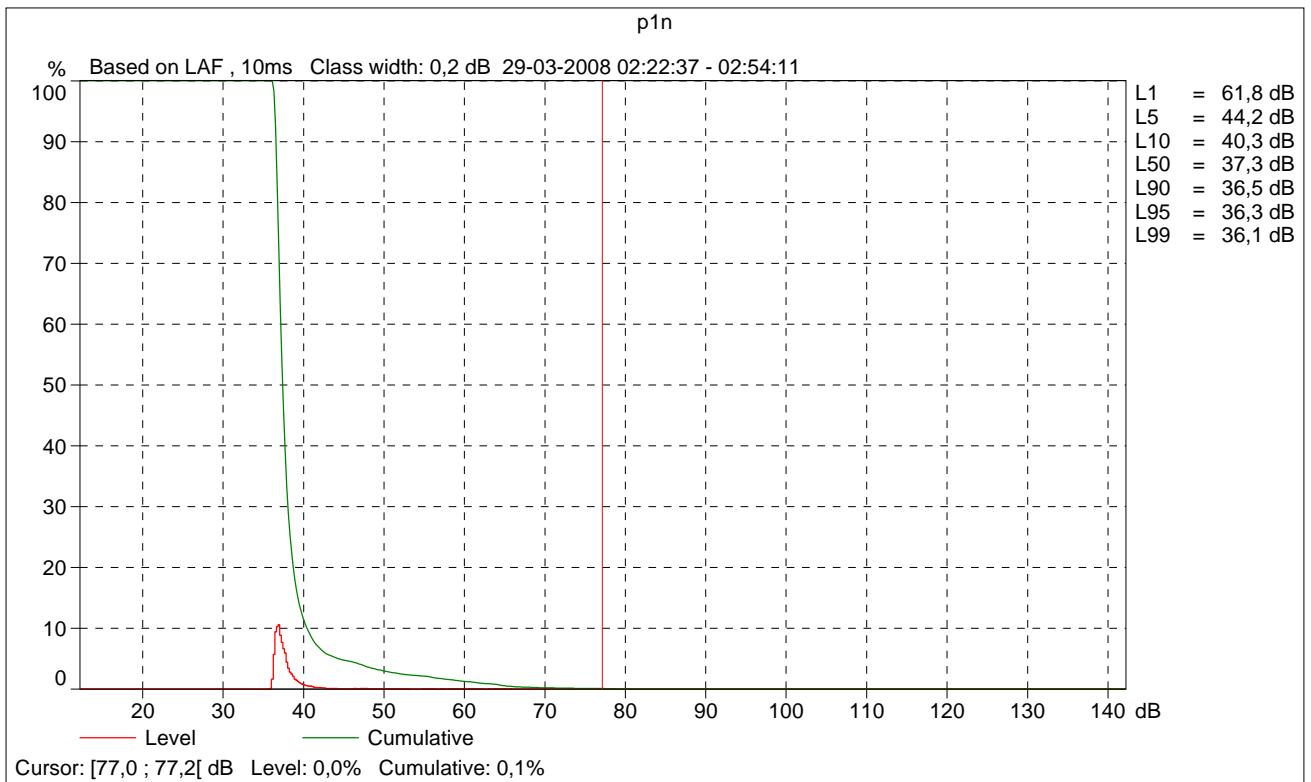
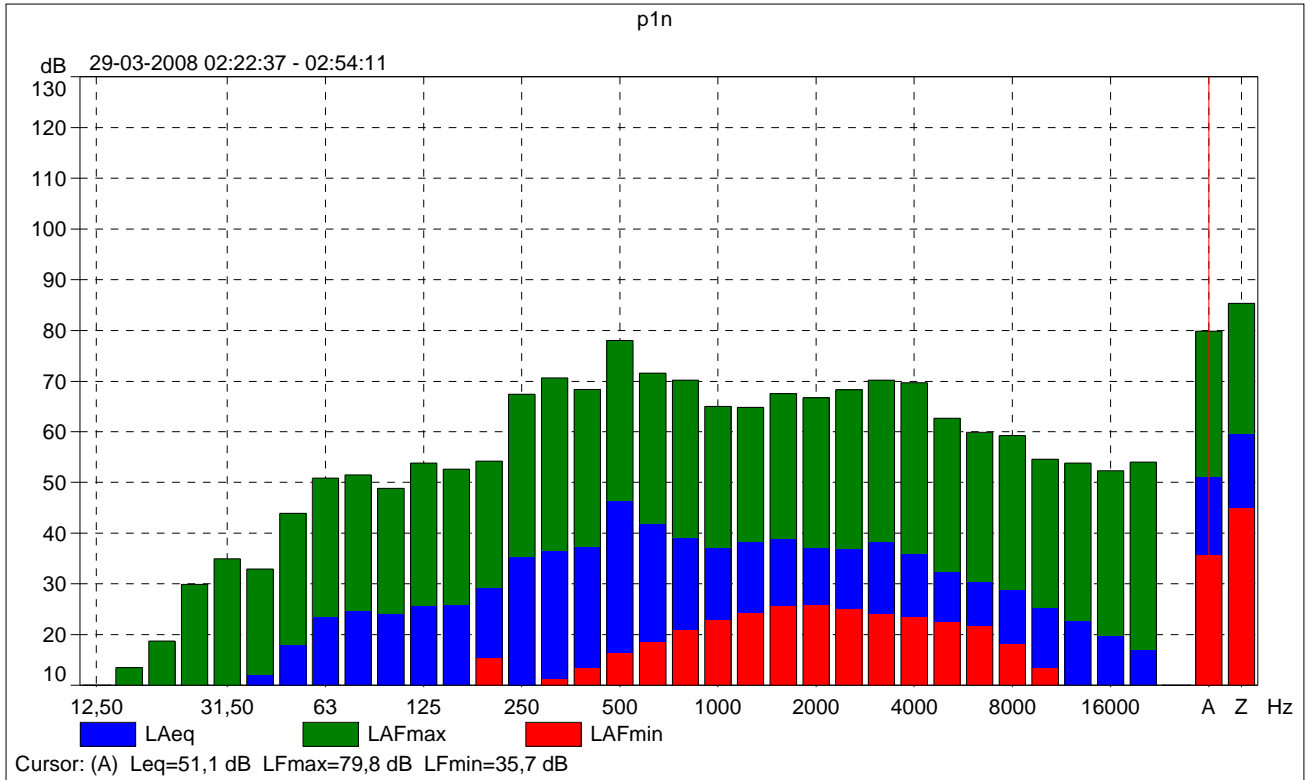
	LApeak [dB]	LAF50 [dB]	LAeq 12,5Hz [dB]	LAeq 16Hz [dB]	LAeq 20Hz [dB]	LAeq 25Hz [dB]	LAeq 31,5Hz [dB]	LAeq 40Hz [dB]
Value	94,4	37,3	-17,4	-9,0	-4,1	3,9	9,5	12,0
Time	02:30:22							
Date	29-03-2008							

	LAeq 50Hz [dB]	LAeq 63Hz [dB]	LAeq 80Hz [dB]	LAeq 100Hz [dB]	LAeq 125Hz [dB]	LAeq 160Hz [dB]	LAeq 200Hz [dB]	LAeq 250Hz [dB]
Value	18,0	23,4	24,8	24,0	25,6	25,9	29,2	35,3
Time								
Date								

	LAeq 315Hz [dB]	LAeq 400Hz [dB]	LAeq 500Hz [dB]	LAeq 630Hz [dB]	LAeq 800Hz [dB]	LAeq 1kHz [dB]	LAeq 1,25kHz [dB]
Value	36,6	37,3	46,4	41,9	39,2	37,2	38,3
Time							
Date							

	LAeq 1,6kHz [dB]	LAeq 2kHz [dB]	LAeq 2,5kHz [dB]	LAeq 3,15kHz [dB]	LAeq 4kHz [dB]	LAeq 5kHz [dB]	LAeq 6,3kHz [dB]
Value	38,8	37,1	36,9	38,5	36,0	32,4	30,5
Time							
Date							

	LAeq 8kHz [dB]	LAeq 10kHz [dB]	LAeq 12,5kHz [dB]	LAeq 16kHz [dB]	LAeq 20kHz [dB]
Value	28,9	25,2	22,8	19,8	17,0
Time					
Date					



2250

Instrument:		2250
Application:		BZ7223 Version 2.1
Start Time:		03/28/2008 17:21:33
End Time:		03/28/2008 17:51:39
Elapsed Time:		00:30:06
Bandwidth:		1/3-octave
Max Input Level:		140.96

	Time	Frequency
Broadband (excl. Peak):	FSI	AZ
Broadband Peak:		A
Spectrum:	FS	A

Instrument Serial Number:		2559224
Microphone Serial Number:		2556234
Input:		Top Socket
Windscreen Correction:		UA-1650
Sound Field Correction:		Diffuse-field

Calibration Time:		03/28/2008 16:48:01
Calibration Type:		External reference
Sensitivity:		49.90 mV/Pa

p2d

	Start time	End time	Elapsed time	Overload [%]	LAeq [dB]	LAFmax [dB]	LAFmin [dB]	LAeq [dB]	LAeq-LAeq [dB]
Value				0,00	64,9	89,6	42,8	68,3	3,4
Time	17:21:33	17:51:39	0:30:06						
Date	28-03-2008	28-03-2008							

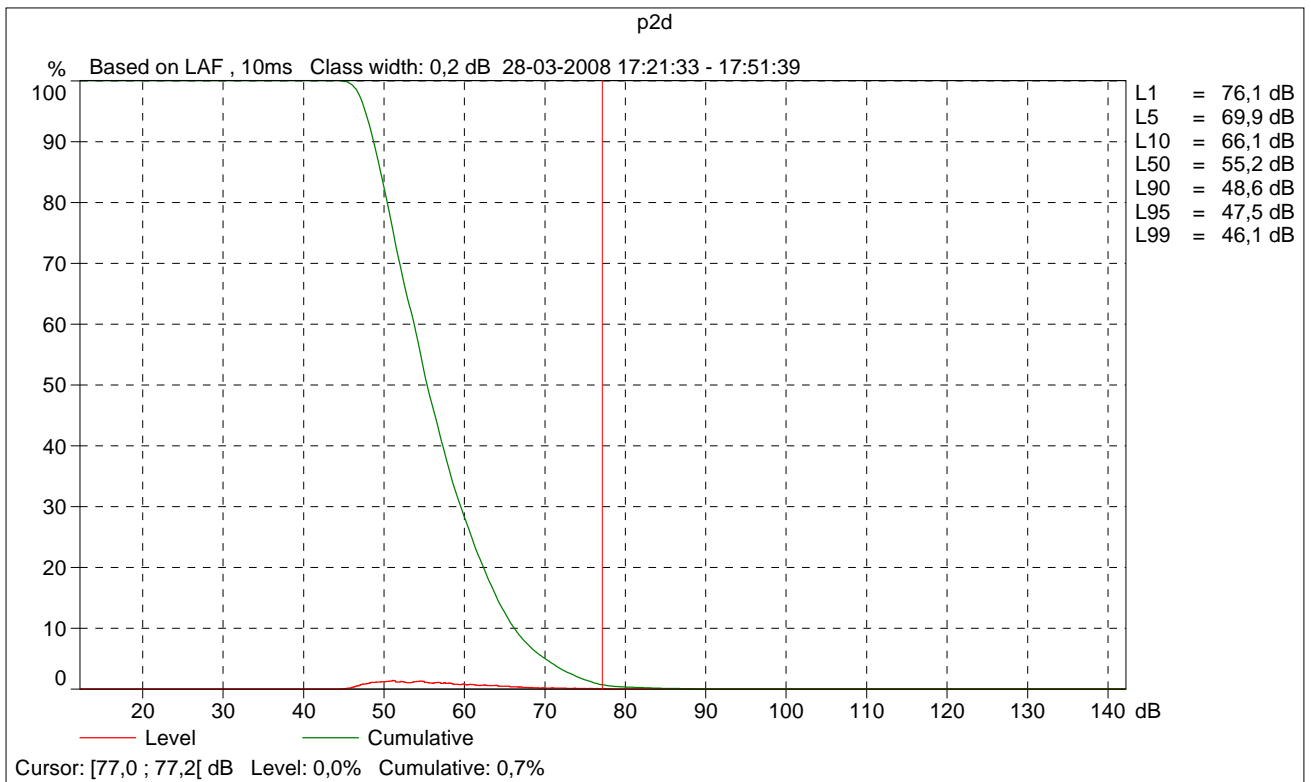
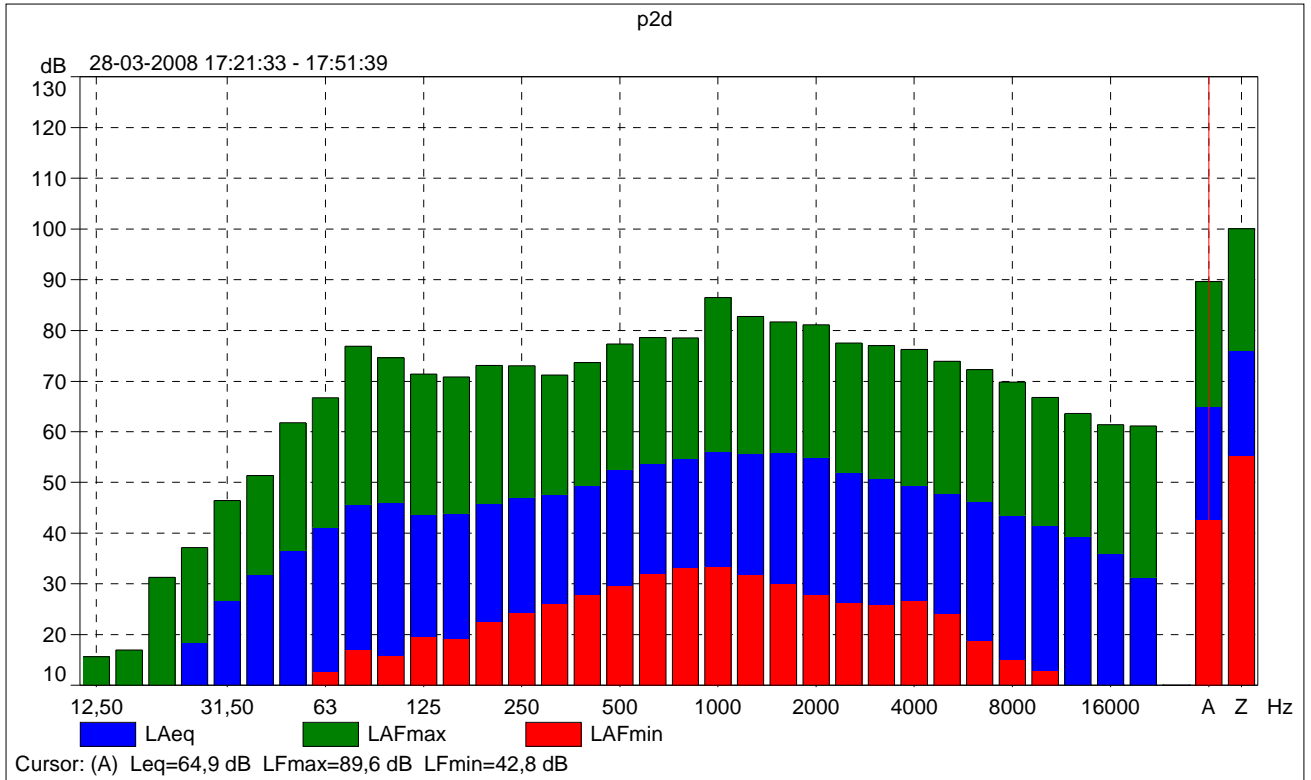
	LApeak [dB]	LAF50 [dB]	LAeq 12,5Hz [dB]	LAeq 16Hz [dB]	LAeq 20Hz [dB]	LAeq 25Hz [dB]	LAeq 31,5Hz [dB]	LAeq 40Hz [dB]
Value	102,7	55,2	-7,4	0,6	9,3	18,4	26,7	31,8
Time	17:42:16							
Date	28-03-2008							

	LAeq 50Hz [dB]	LAeq 63Hz [dB]	LAeq 80Hz [dB]	LAeq 100Hz [dB]	LAeq 125Hz [dB]	LAeq 160Hz [dB]	LAeq 200Hz [dB]	LAeq 250Hz [dB]
Value	36,7	41,1	45,7	46,0	43,7	43,9	45,8	47,0
Time								
Date								

	LAeq 315Hz [dB]	LAeq 400Hz [dB]	LAeq 500Hz [dB]	LAeq 630Hz [dB]	LAeq 800Hz [dB]	LAeq 1kHz [dB]	LAeq 1,25kHz [dB]
Value	47,7	49,4	52,6	53,6	54,7	56,1	55,6
Time							
Date							

	LAeq 1,6kHz [dB]	LAeq 2kHz [dB]	LAeq 2,5kHz [dB]	LAeq 3,15kHz [dB]	LAeq 4kHz [dB]	LAeq 5kHz [dB]	LAeq 6,3kHz [dB]
Value	55,9	55,0	51,9	50,6	49,5	47,7	46,1
Time							
Date							

	LAeq 8kHz [dB]	LAeq 10kHz [dB]	LAeq 12,5kHz [dB]	LAeq 16kHz [dB]	LAeq 20kHz [dB]
Value	43,6	41,5	39,4	36,0	31,4
Time					
Date					



2250

Instrument:		2250
Application:		BZ7223 Version 2.1
Start Time:		03/28/2008 20:04:24
End Time:		03/28/2008 20:36:50
Elapsed Time:		00:32:26
Bandwidth:		1/3-octave
Max Input Level:		140.96

	Time	Frequency
Broadband (excl. Peak):	FSI	AZ
Broadband Peak:		A
Spectrum:	FS	A

Instrument Serial Number:		2559224
Microphone Serial Number:		2556234
Input:		Top Socket
Windscreen Correction:		UA-1650
Sound Field Correction:		Diffuse-field

Calibration Time:		03/28/2008 20:03:38
Calibration Type:		External reference
Sensitivity:		49.93 mV/Pa

p2e

	Start time	End time	Elapsed time	Overload [%]	LAeq [dB]	LAFmax [dB]	LAFmin [dB]	LAeq [dB]	LAeq-LAeq [dB]
Value				0,00	51,3	72,2	39,5	54,9	3,6
Time	20:04:24	20:36:50	0:32:26						
Date	28-03-2008	28-03-2008							

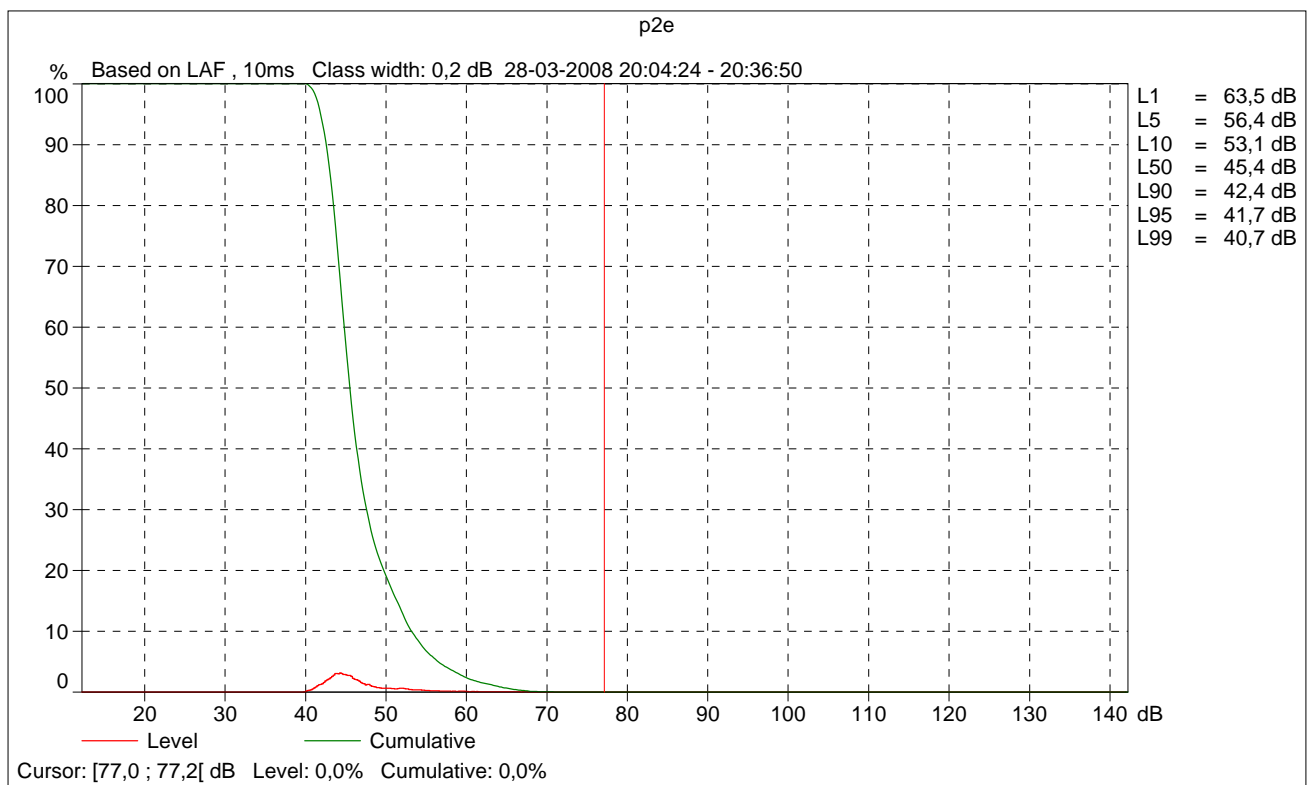
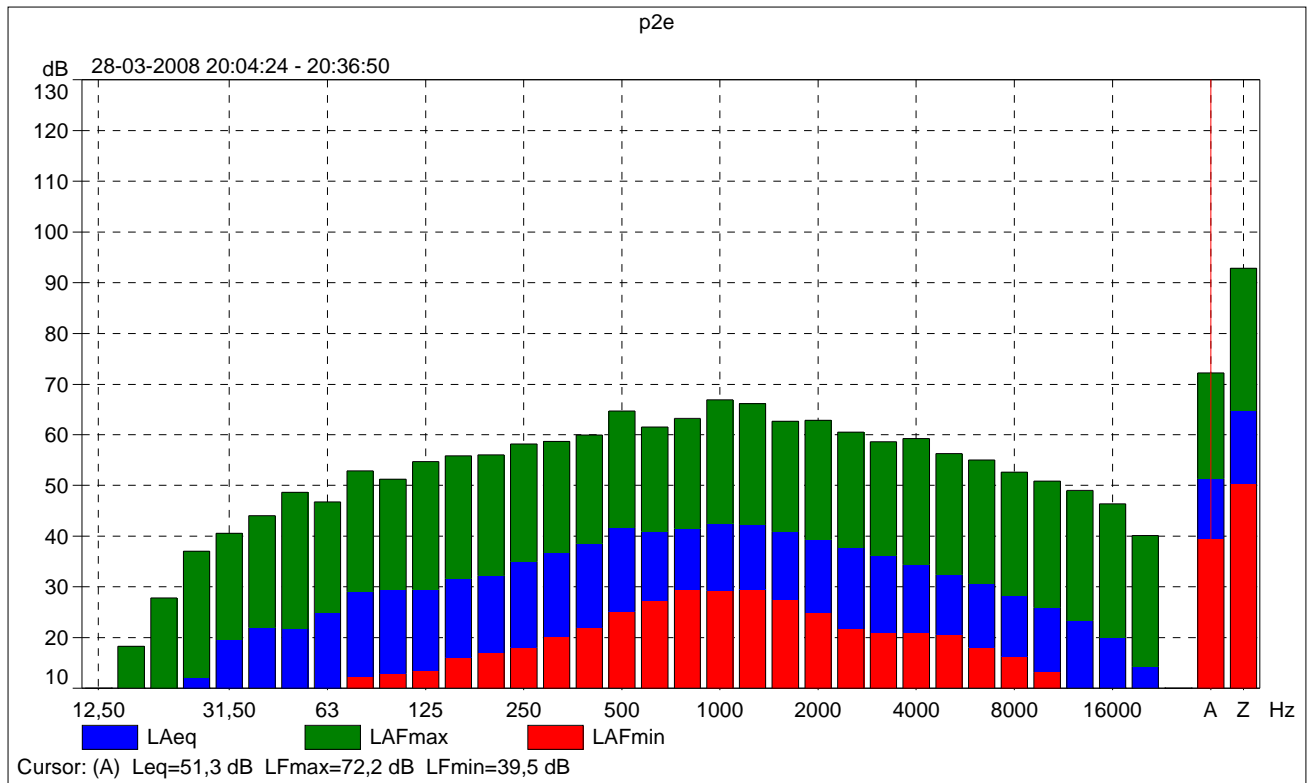
	LApeak [dB]	LAF50 [dB]	LAeq 12,5Hz [dB]	LAeq 16Hz [dB]	LAeq 20Hz [dB]	LAeq 25Hz [dB]	LAeq 31,5Hz [dB]	LAeq 40Hz [dB]
Value	89,1	45,4	-14,0	-6,3	1,9	12,0	19,5	22,0
Time	20:05:23							
Date	28-03-2008							

	LAeq 50Hz [dB]	LAeq 63Hz [dB]	LAeq 80Hz [dB]	LAeq 100Hz [dB]	LAeq 125Hz [dB]	LAeq 160Hz [dB]	LAeq 200Hz [dB]	LAeq 250Hz [dB]
Value	21,7	24,8	29,0	29,4	29,6	31,7	32,2	35,0
Time								
Date								

	LAeq 315Hz [dB]	LAeq 400Hz [dB]	LAeq 500Hz [dB]	LAeq 630Hz [dB]	LAeq 800Hz [dB]	LAeq 1kHz [dB]	LAeq 1,25kHz [dB]
Value	36,7	38,6	41,6	41,0	41,5	42,6	42,2
Time							
Date							

	LAeq 1,6kHz [dB]	LAeq 2kHz [dB]	LAeq 2,5kHz [dB]	LAeq 3,15kHz [dB]	LAeq 4kHz [dB]	LAeq 5kHz [dB]	LAeq 6,3kHz [dB]
Value	40,9	39,4	37,7	36,2	34,4	32,4	30,6
Time							
Date							

	LAeq 8kHz [dB]	LAeq 10kHz [dB]	LAeq 12,5kHz [dB]	LAeq 16kHz [dB]	LAeq 20kHz [dB]
Value	28,2	25,9	23,3	20,0	14,3
Time					
Date					



2250

Instrument:		2250
Application:		BZ7223 Version 2.1
Start Time:		03/29/2008 02:56:33
End Time:		03/29/2008 03:28:33
Elapsed Time:		00:32:00
Bandwidth:		1/3-octave
Max Input Level:		140.92

	Time	Frequency
Broadband (excl. Peak):	FSI	AZ
Broadband Peak:		A
Spectrum:	FS	A

Instrument Serial Number:		2559224
Microphone Serial Number:		2556234
Input:		Top Socket
Windscreen Correction:		UA-1650
Sound Field Correction:		Diffuse-field

Calibration Time:		03/29/2008 02:22:17
Calibration Type:		External reference
Sensitivity:		50.14 mV/Pa

p2n

	Start time	End time	Elapsed time	Overload [%]	LAeq [dB]	LAFmax [dB]	LAFmin [dB]	LAeq [dB]	LAeq-LAeq [dB]
Value				0,00	48,1	73,5	36,9	49,8	1,7
Time	02:56:33	03:28:33	0:32:00						
Date	29-03-2008	29-03-2008							

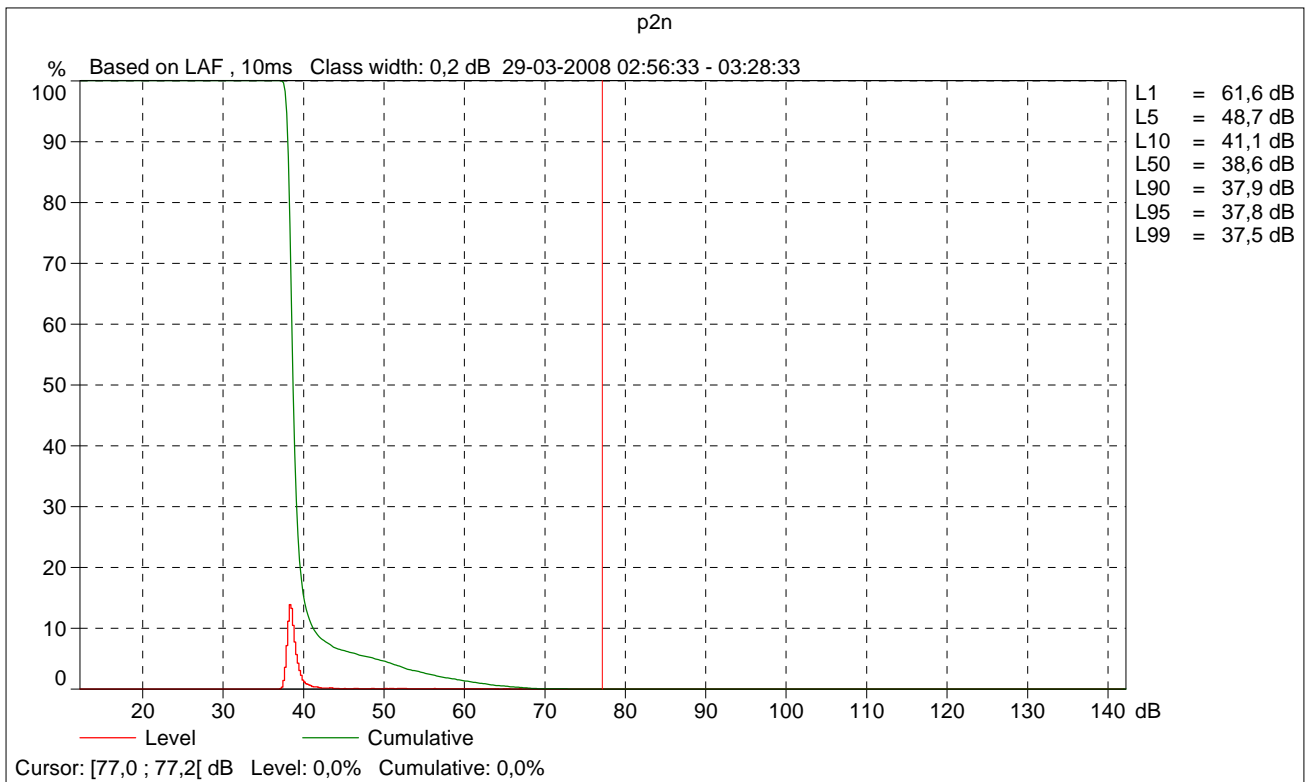
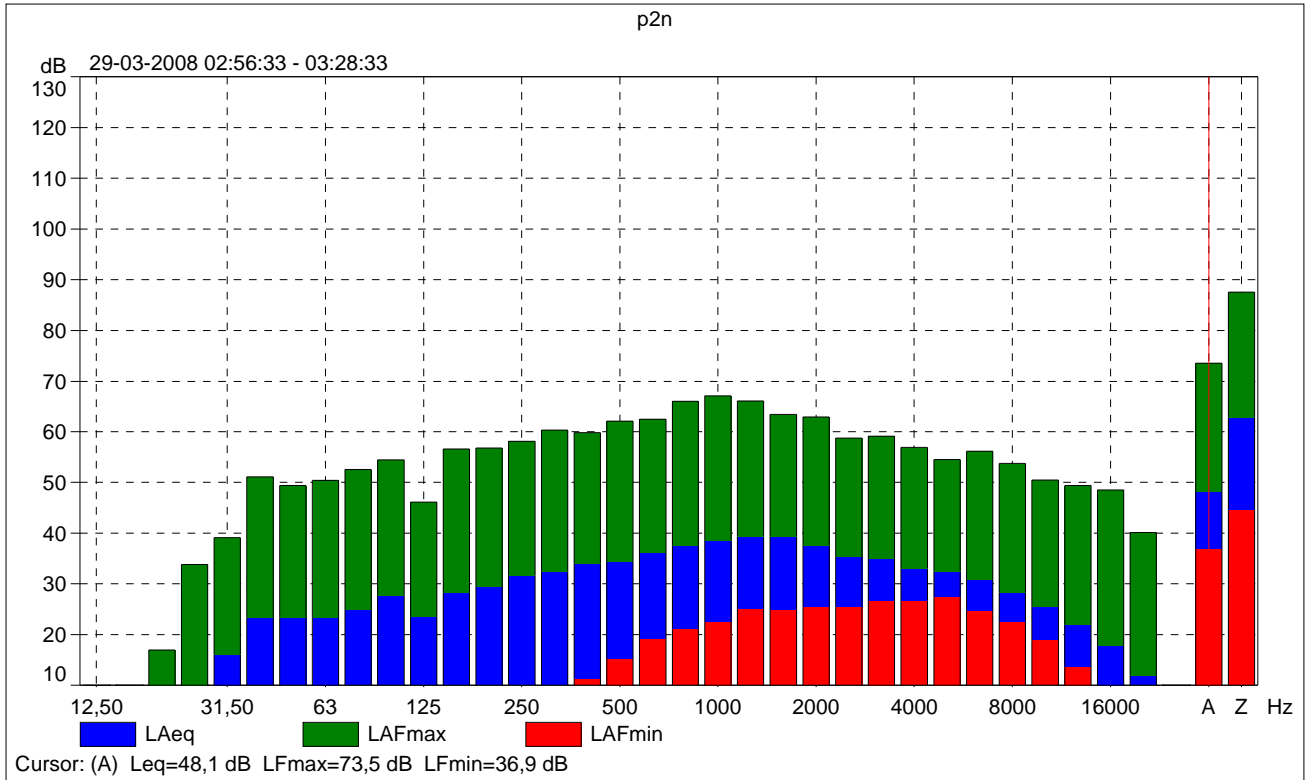
	LApeak [dB]	LAF50 [dB]	LAeq 12,5Hz [dB]	LAeq 16Hz [dB]	LAeq 20Hz [dB]	LAeq 25Hz [dB]	LAeq 31,5Hz [dB]	LAeq 40Hz [dB]
Value	86,1	38,6	-18,9	-11,7	-3,5	9,4	16,1	23,3
Time	03:23:36							
Date	29-03-2008							

	LAeq 50Hz [dB]	LAeq 63Hz [dB]	LAeq 80Hz [dB]	LAeq 100Hz [dB]	LAeq 125Hz [dB]	LAeq 160Hz [dB]	LAeq 200Hz [dB]	LAeq 250Hz [dB]
Value	23,3	23,2	24,9	27,7	23,5	28,3	29,4	31,6
Time								
Date								

	LAeq 315Hz [dB]	LAeq 400Hz [dB]	LAeq 500Hz [dB]	LAeq 630Hz [dB]	LAeq 800Hz [dB]	LAeq 1kHz [dB]	LAeq 1,25kHz [dB]
Value	32,5	34,1	34,3	36,0	37,5	38,7	39,5
Time							
Date							

	LAeq 1,6kHz [dB]	LAeq 2kHz [dB]	LAeq 2,5kHz [dB]	LAeq 3,15kHz [dB]	LAeq 4kHz [dB]	LAeq 5kHz [dB]	LAeq 6,3kHz [dB]
Value	39,4	37,6	35,3	34,9	33,1	32,5	30,8
Time							
Date							

	LAeq 8kHz [dB]	LAeq 10kHz [dB]	LAeq 12,5kHz [dB]	LAeq 16kHz [dB]	LAeq 20kHz [dB]
Value	28,3	25,5	21,9	17,7	12,0
Time					
Date					



2250

Instrument:		2250
Application:		BZ7223 Version 2.1
Start Time:		03/28/2008 17:54:00
End Time:		03/28/2008 18:24:56
Elapsed Time:		00:30:56
Bandwidth:		1/3-octave
Max Input Level:		140.96

	Time	Frequency
Broadband (excl. Peak):	FSI	AZ
Broadband Peak:		A
Spectrum:	FS	A

Instrument Serial Number:		2559224
Microphone Serial Number:		2556234
Input:		Top Socket
Windscreen Correction:		UA-1650
Sound Field Correction:		Diffuse-field

Calibration Time:		03/28/2008 16:48:01
Calibration Type:		External reference
Sensitivity:		49.90 mV/Pa

p3d

	Start time	End time	Elapsed time	Overload [%]	LAeq [dB]	LAFmax [dB]	LAFmin [dB]	LAeq [dB]	LAeq-LAeq [dB]
Value				0,00	55,9	72,2	42,4	57,2	1,2
Time	17:54:00	18:24:56	0:30:56						
Date	28-03-2008	28-03-2008							

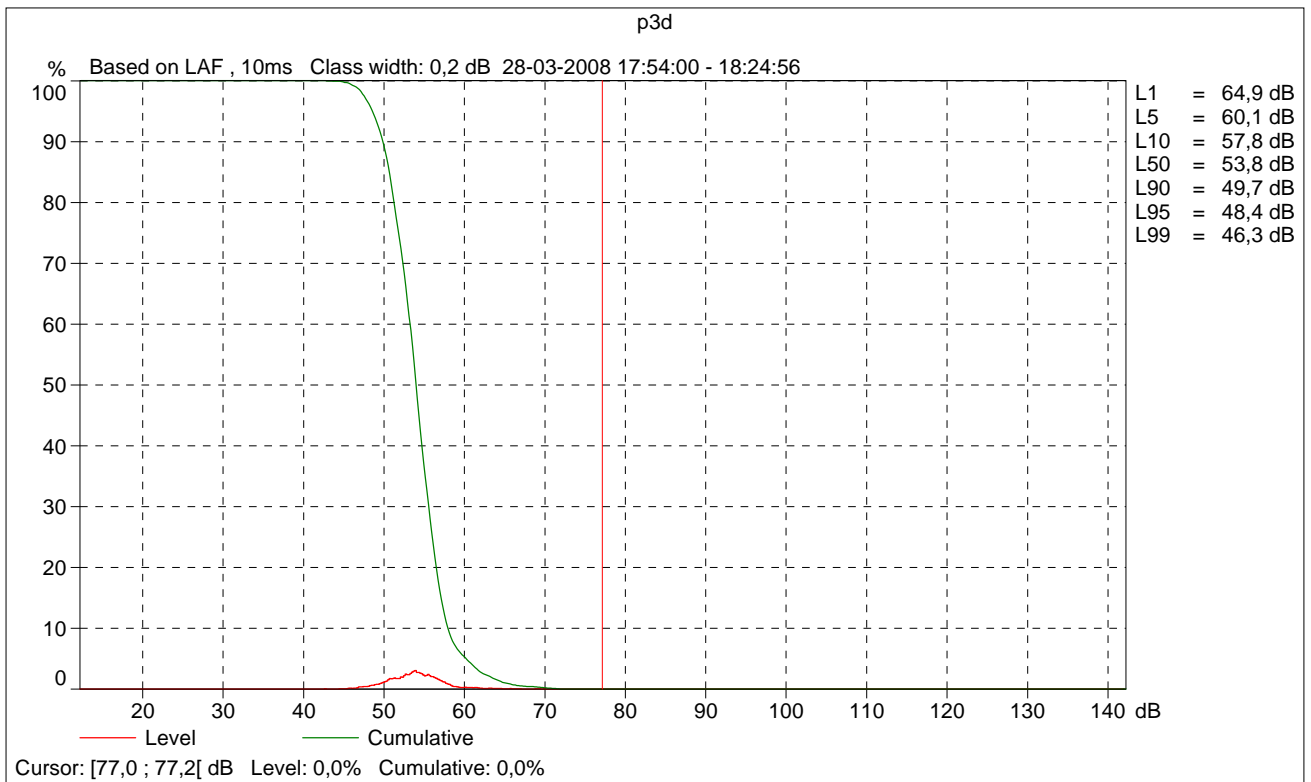
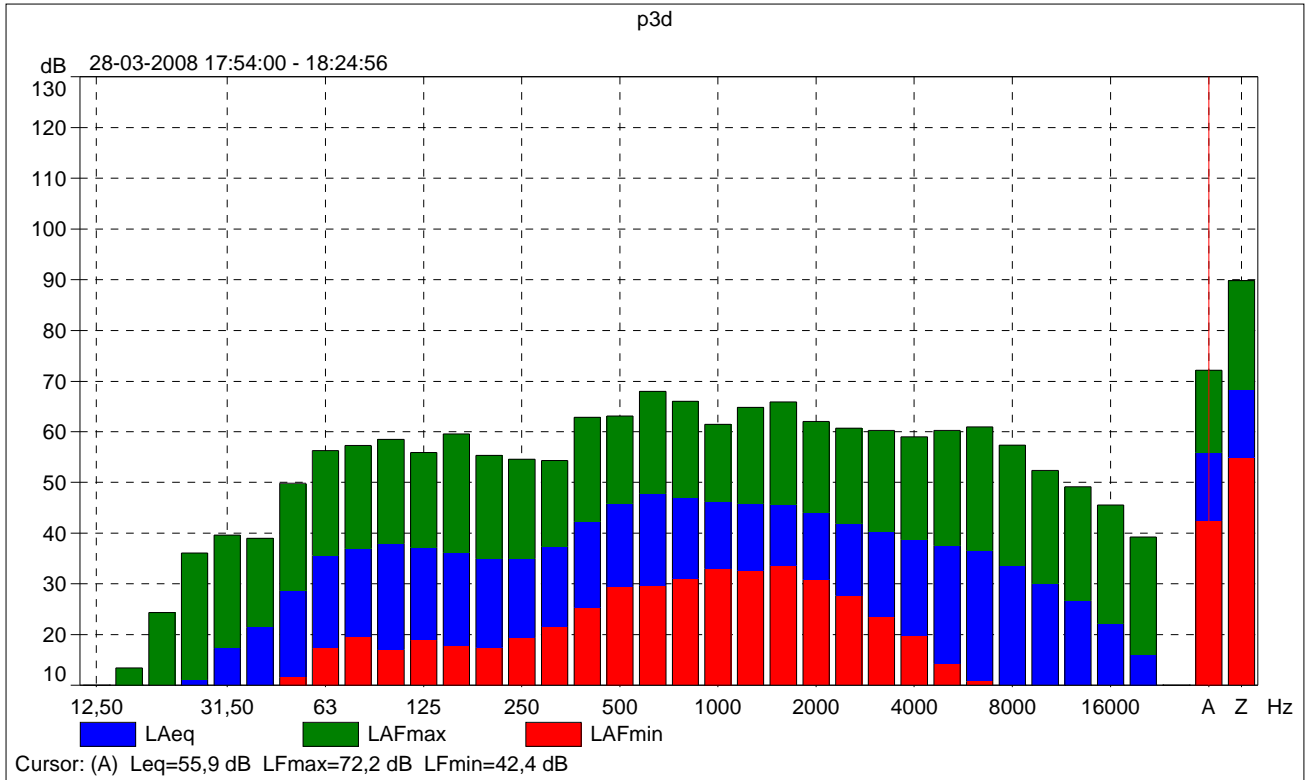
	LApeak [dB]	LAF50 [dB]	LAeq 12,5Hz [dB]	LAeq 16Hz [dB]	LAeq 20Hz [dB]	LAeq 25Hz [dB]	LAeq 31,5Hz [dB]	LAeq 40Hz [dB]
Value	85,3	53,8	-11,2	-3,0	3,7	11,1	17,2	21,4
Time	18:00:42							
Date	28-03-2008							

	LAeq 50Hz [dB]	LAeq 63Hz [dB]	LAeq 80Hz [dB]	LAeq 100Hz [dB]	LAeq 125Hz [dB]	LAeq 160Hz [dB]	LAeq 200Hz [dB]	LAeq 250Hz [dB]
Value	28,7	35,6	37,0	37,9	37,2	36,2	34,9	34,9
Time								
Date								

	LAeq 315Hz [dB]	LAeq 400Hz [dB]	LAeq 500Hz [dB]	LAeq 630Hz [dB]	LAeq 800Hz [dB]	LAeq 1kHz [dB]	LAeq 1,25kHz [dB]
Value	37,4	42,3	45,9	47,8	46,9	46,2	45,9
Time							
Date							

	LAeq 1,6kHz [dB]	LAeq 2kHz [dB]	LAeq 2,5kHz [dB]	LAeq 3,15kHz [dB]	LAeq 4kHz [dB]	LAeq 5kHz [dB]	LAeq 6,3kHz [dB]
Value	45,7	44,1	41,9	40,4	38,7	37,6	36,6
Time							
Date							

	LAeq 8kHz [dB]	LAeq 10kHz [dB]	LAeq 12,5kHz [dB]	LAeq 16kHz [dB]	LAeq 20kHz [dB]
Value	33,5	30,1	26,8	22,2	16,0
Time					
Date					



2250

Instrument:		2250
Application:		BZ7223 Version 2.1
Start Time:		03/28/2008 20:38:47
End Time:		03/28/2008 21:09:38
Elapsed Time:		00:30:51
Bandwidth:		1/3-octave
Max Input Level:		140.96

	Time	Frequency
Broadband (excl. Peak):	FSI	AZ
Broadband Peak:		A
Spectrum:	FS	A

Instrument Serial Number:		2559224
Microphone Serial Number:		2556234
Input:		Top Socket
Windscreen Correction:		UA-1650
Sound Field Correction:		Diffuse-field

Calibration Time:		03/28/2008 20:03:38
Calibration Type:		External reference
Sensitivity:		49.93 mV/Pa

p3e

	Start time	End time	Elapsed time	Overload [%]	LAeq [dB]	LAFmax [dB]	LAFmin [dB]	LAeq [dB]	LAeq-LAeq [dB]
Value				0,00	51,8	66,1	40,2	53,0	1,2
Time	20:38:47	21:09:38	0:30:51						
Date	28-03-2008	28-03-2008							

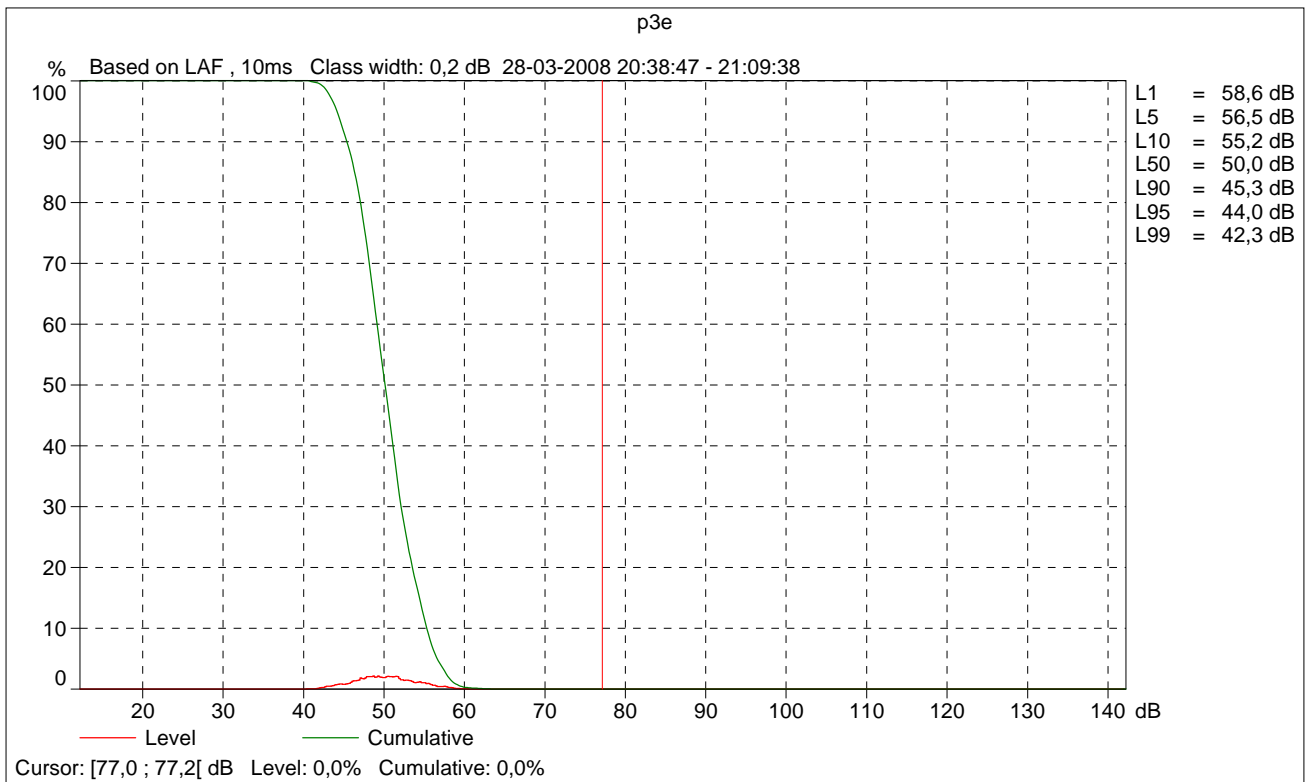
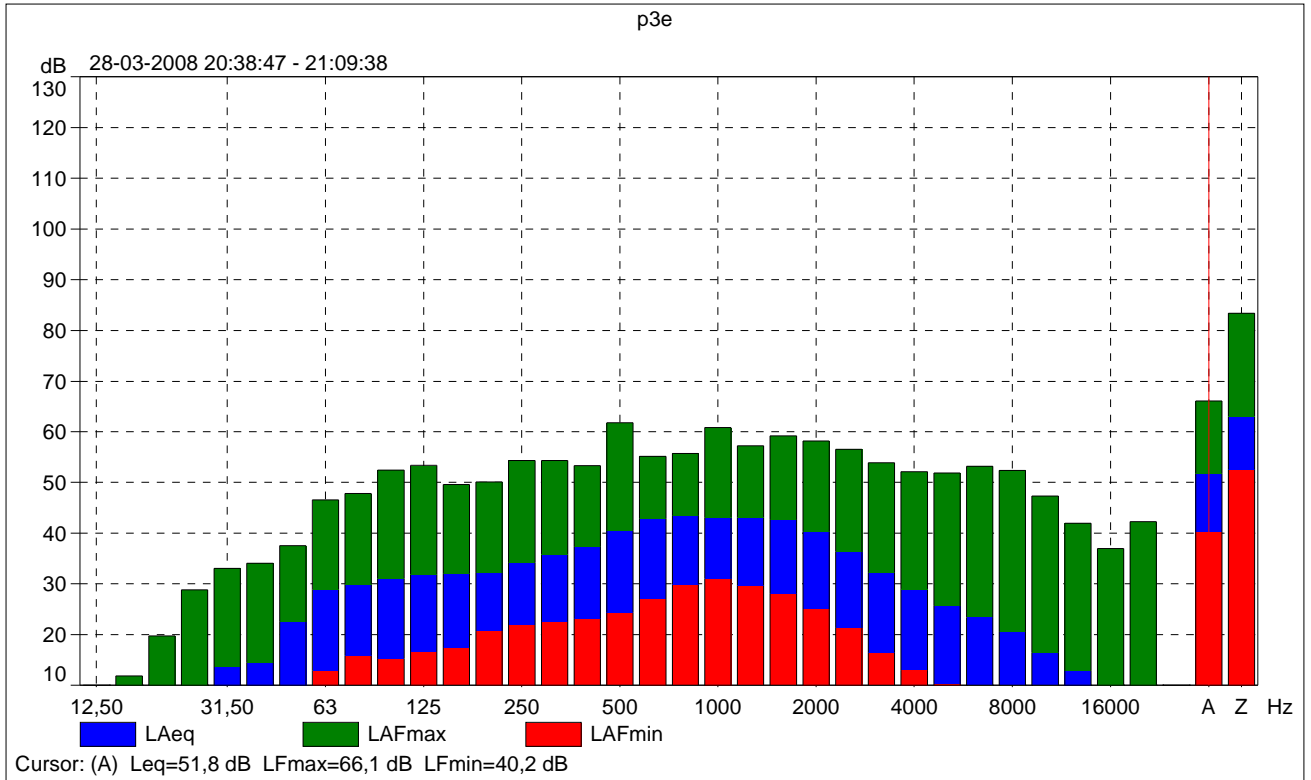
	LApeak [dB]	LAF50 [dB]	LAeq 12,5Hz [dB]	LAeq 16Hz [dB]	LAeq 20Hz [dB]	LAeq 25Hz [dB]	LAeq 31,5Hz [dB]	LAeq 40Hz [dB]
Value	83,9	50,0	-16,0	-7,8	-1,0	8,6	13,6	14,4
Time	21:01:32							
Date	28-03-2008							

	LAeq 50Hz [dB]	LAeq 63Hz [dB]	LAeq 80Hz [dB]	LAeq 100Hz [dB]	LAeq 125Hz [dB]	LAeq 160Hz [dB]	LAeq 200Hz [dB]	LAeq 250Hz [dB]
Value	22,5	28,9	29,9	31,1	31,9	32,0	32,1	34,2
Time								
Date								

	LAeq 315Hz [dB]	LAeq 400Hz [dB]	LAeq 500Hz [dB]	LAeq 630Hz [dB]	LAeq 800Hz [dB]	LAeq 1kHz [dB]	LAeq 1,25kHz [dB]
Value	35,9	37,3	40,5	42,9	43,5	43,1	43,1
Time							
Date							

	LAeq 1,6kHz [dB]	LAeq 2kHz [dB]	LAeq 2,5kHz [dB]	LAeq 3,15kHz [dB]	LAeq 4kHz [dB]	LAeq 5kHz [dB]	LAeq 6,3kHz [dB]
Value	42,6	40,3	36,3	32,2	29,0	25,7	23,4
Time							
Date							

	LAeq 8kHz [dB]	LAeq 10kHz [dB]	LAeq 12,5kHz [dB]	LAeq 16kHz [dB]	LAeq 20kHz [dB]
Value	20,5	16,4	12,8	10,0	8,0
Time					
Date					



2250

Instrument:		2250
Application:		BZ7223 Version 2.1
Start Time:		03/29/2008 03:30:56
End Time:		03/29/2008 04:01:58
Elapsed Time:		00:31:02
Bandwidth:		1/3-octave
Max Input Level:		140.92

	Time	Frequency
Broadband (excl. Peak):	FSI	AZ
Broadband Peak:		A
Spectrum:	FS	A

Instrument Serial Number:		2559224
Microphone Serial Number:		2556234
Input:		Top Socket
Windscreen Correction:		UA-1650
Sound Field Correction:		Diffuse-field

Calibration Time:		03/29/2008 02:22:17
Calibration Type:		External reference
Sensitivity:		50.14 mV/Pa

p3n

	Start time	End time	Elapsed time	Overload [%]	LAeq [dB]	LAFmax [dB]	LAFmin [dB]	LAeq [dB]	LAeq-LAeq [dB]
Value				0,00	44,0	62,9	31,0	45,7	1,7
Time	03:30:56	04:01:58	0:31:02						
Date	29-03-2008	29-03-2008							

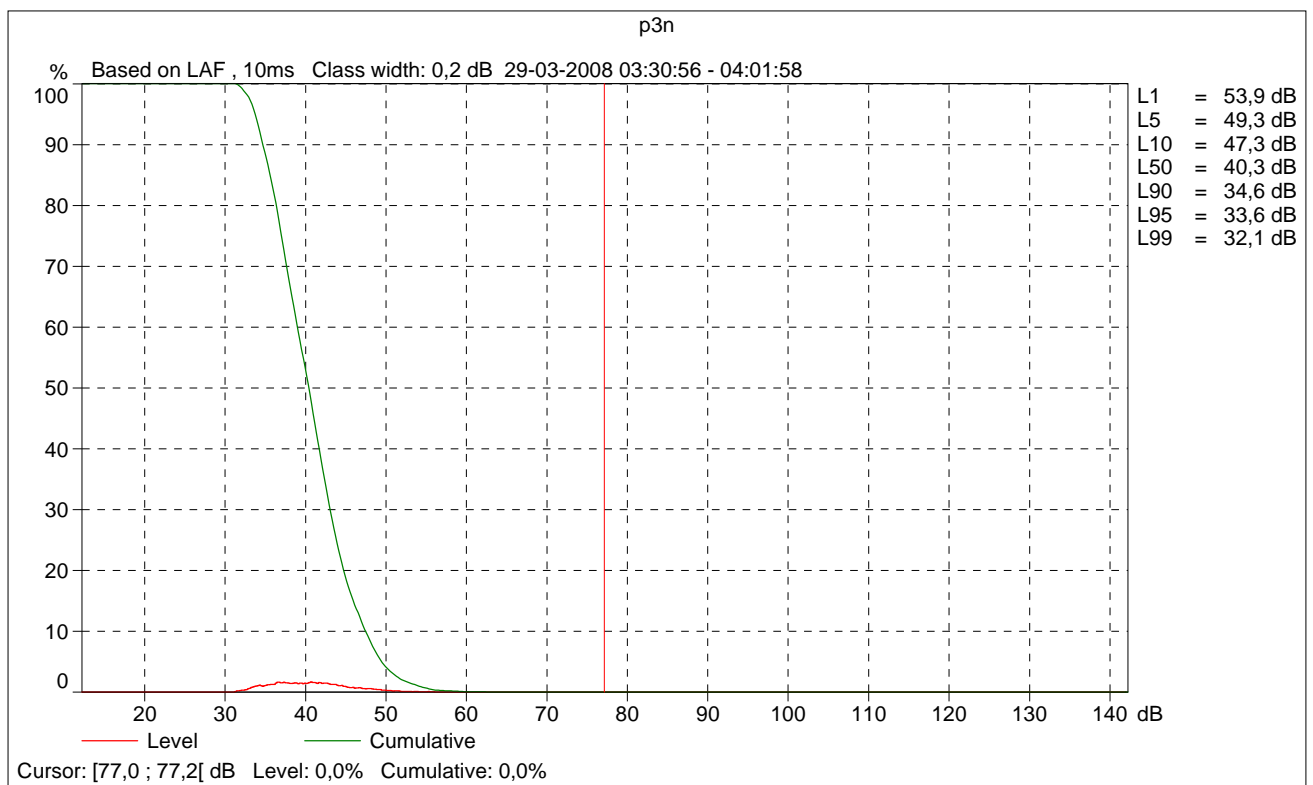
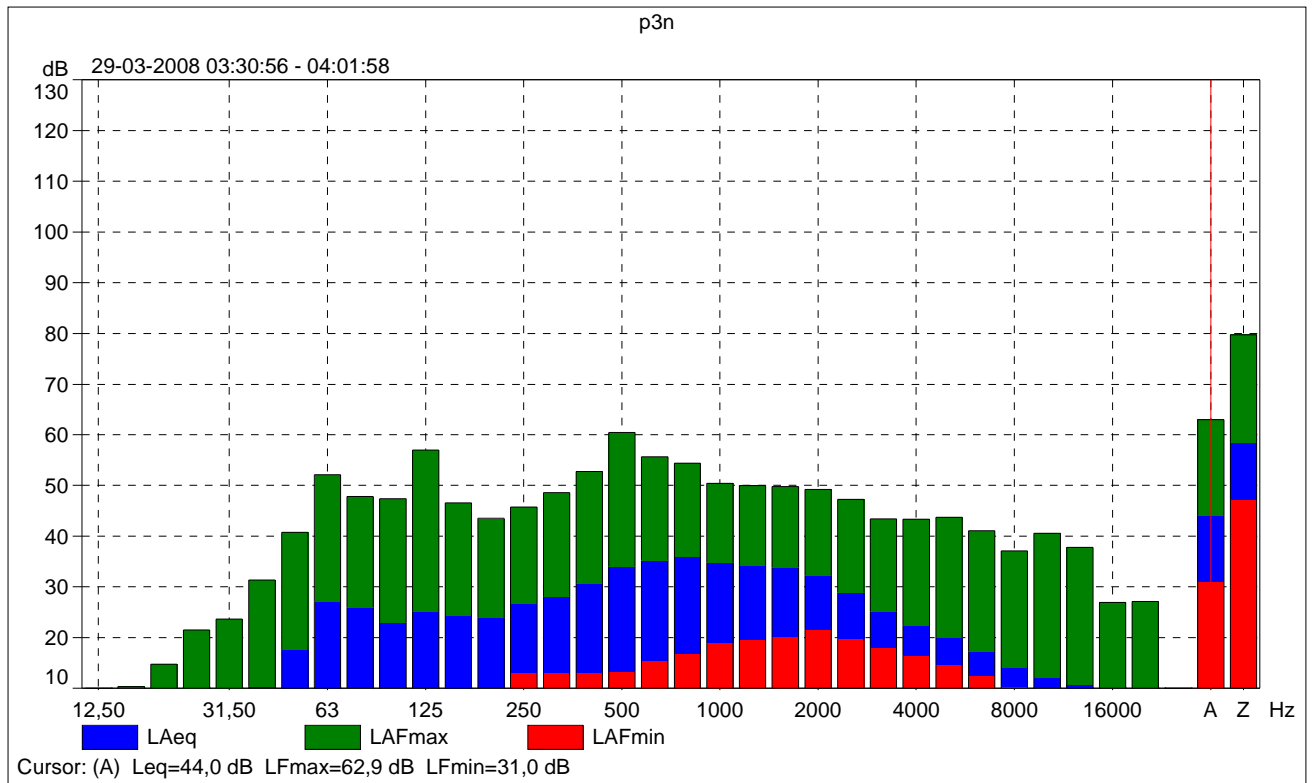
	LApeak [dB]	LAF50 [dB]	LAeq 12,5Hz [dB]	LAeq 16Hz [dB]	LAeq 20Hz [dB]	LAeq 25Hz [dB]	LAeq 31,5Hz [dB]	LAeq 40Hz [dB]
Value	77,1	40,3	-18,8	-10,4	-4,7	1,7	4,2	10,3
Time	04:01:55							
Date	29-03-2008							

	LAeq 50Hz [dB]	LAeq 63Hz [dB]	LAeq 80Hz [dB]	LAeq 100Hz [dB]	LAeq 125Hz [dB]	LAeq 160Hz [dB]	LAeq 200Hz [dB]	LAeq 250Hz [dB]
Value	17,5	27,0	25,9	22,9	25,1	24,2	23,9	26,5
Time								
Date								

	LAeq 315Hz [dB]	LAeq 400Hz [dB]	LAeq 500Hz [dB]	LAeq 630Hz [dB]	LAeq 800Hz [dB]	LAeq 1kHz [dB]	LAeq 1,25kHz [dB]
Value	28,1	30,6	34,0	35,3	35,9	34,8	34,2
Time							
Date							

	LAeq 1,6kHz [dB]	LAeq 2kHz [dB]	LAeq 2,5kHz [dB]	LAeq 3,15kHz [dB]	LAeq 4kHz [dB]	LAeq 5kHz [dB]	LAeq 6,3kHz [dB]
Value	33,9	32,2	28,9	25,1	22,3	19,9	17,2
Time							
Date							

	LAeq 8kHz [dB]	LAeq 10kHz [dB]	LAeq 12,5kHz [dB]	LAeq 16kHz [dB]	LAeq 20kHz [dB]
Value	14,0	11,9	10,7	8,1	6,6
Time					
Date					



2250

Instrument:		2250
Application:		BZ7223 Version 2.1
Start Time:		03/28/2008 18:26:32
End Time:		03/28/2008 18:56:58
Elapsed Time:		00:30:26
Bandwidth:		1/3-octave
Max Input Level:		140.96

	Time	Frequency
Broadband (excl. Peak):	FSI	AZ
Broadband Peak:		A
Spectrum:	FS	A

Instrument Serial Number:		2559224
Microphone Serial Number:		2556234
Input:		Top Socket
Windscreen Correction:		UA-1650
Sound Field Correction:		Diffuse-field

Calibration Time:		03/28/2008 16:48:01
Calibration Type:		External reference
Sensitivity:		49.90 mV/Pa

p4d

	Start time	End time	Elapsed time	Overload [%]	LAeq [dB]	LAFmax [dB]	LAFmin [dB]	LAeq [dB]	LAeq-LAeq [dB]
Value				0,00	56,4	79,4	43,7	58,3	1,9
Time	18:26:32	18:56:58	0:30:26						
Date	28-03-2008	28-03-2008							

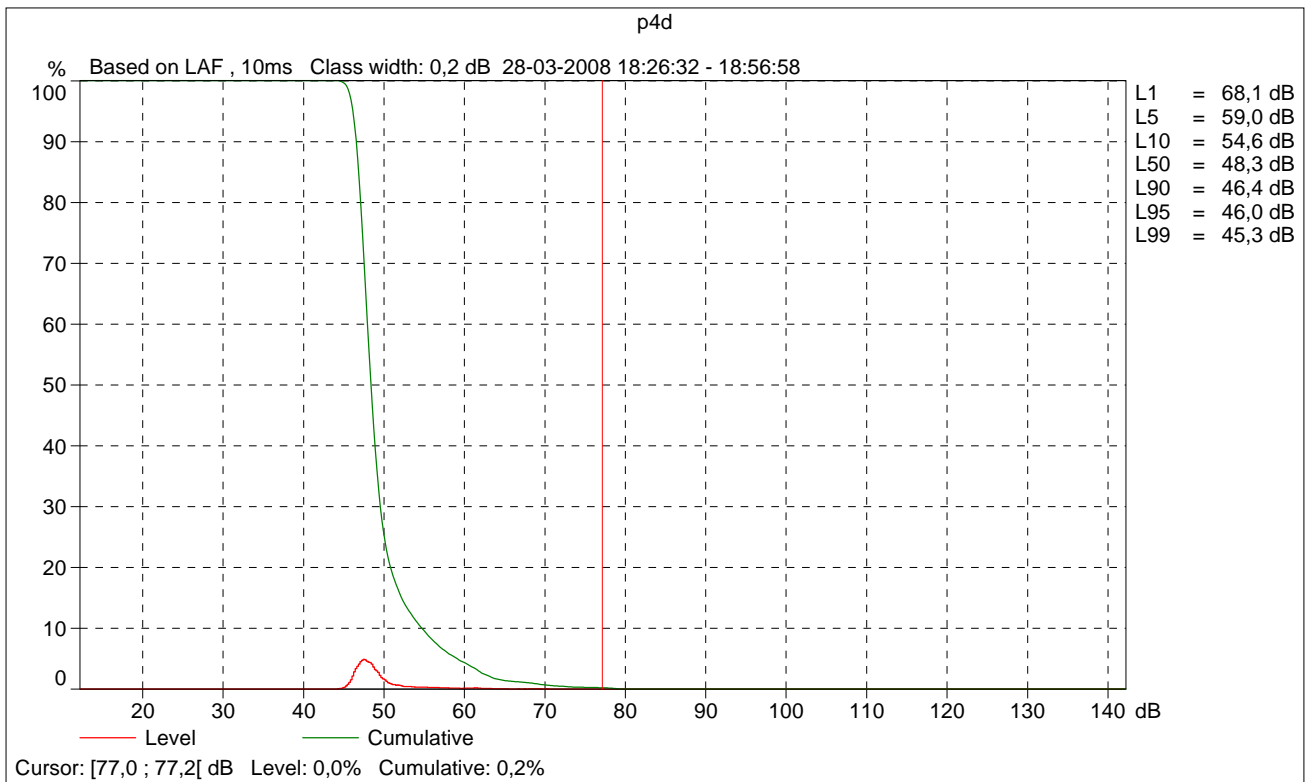
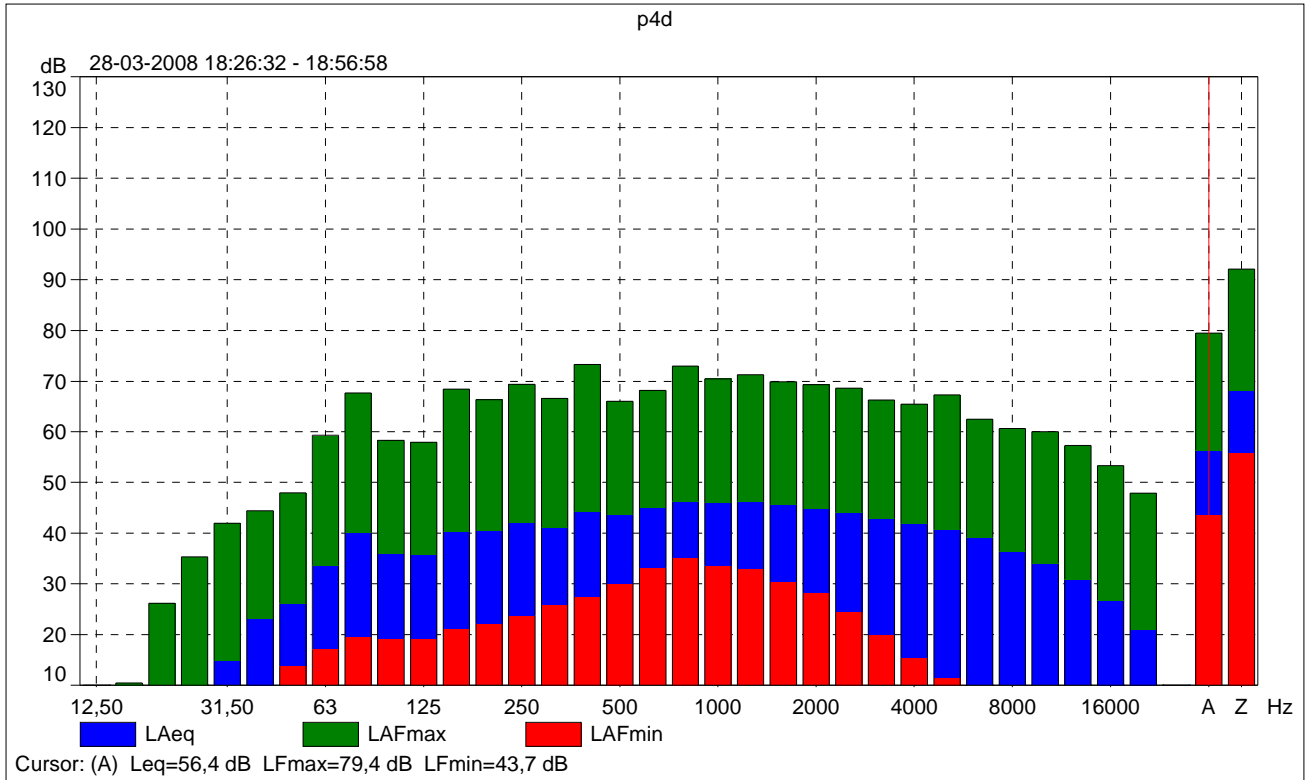
	LApeak [dB]	LAF50 [dB]	LAeq 12,5Hz [dB]	LAeq 16Hz [dB]	LAeq 20Hz [dB]	LAeq 25Hz [dB]	LAeq 31,5Hz [dB]	LAeq 40Hz [dB]
Value	91,9	48,3	-13,8	-6,0	1,9	9,3	14,9	23,0
Time	18:43:55							
Date	28-03-2008							

	LAeq 50Hz [dB]	LAeq 63Hz [dB]	LAeq 80Hz [dB]	LAeq 100Hz [dB]	LAeq 125Hz [dB]	LAeq 160Hz [dB]	LAeq 200Hz [dB]	LAeq 250Hz [dB]
Value	26,1	33,7	40,1	35,8	35,7	40,3	40,5	42,0
Time								
Date								

	LAeq 315Hz [dB]	LAeq 400Hz [dB]	LAeq 500Hz [dB]	LAeq 630Hz [dB]	LAeq 800Hz [dB]	LAeq 1kHz [dB]	LAeq 1,25kHz [dB]
Value	41,1	44,3	43,6	44,9	46,3	45,9	46,3
Time							
Date							

	LAeq 1,6kHz [dB]	LAeq 2kHz [dB]	LAeq 2,5kHz [dB]	LAeq 3,15kHz [dB]	LAeq 4kHz [dB]	LAeq 5kHz [dB]	LAeq 6,3kHz [dB]
Value	45,7	44,8	44,1	42,9	41,9	40,7	39,2
Time							
Date							

	LAeq 8kHz [dB]	LAeq 10kHz [dB]	LAeq 12,5kHz [dB]	LAeq 16kHz [dB]	LAeq 20kHz [dB]
Value	36,4	34,1	31,0	26,8	20,9
Time					
Date					



2250

Instrument:		2250
Application:		BZ7223 Version 2.1
Start Time:		03/28/2008 21:11:55
End Time:		03/28/2008 21:43:07
Elapsed Time:		00:31:12
Bandwidth:		1/3-octave
Max Input Level:		140.96

	Time	Frequency
Broadband (excl. Peak):	FSI	AZ
Broadband Peak:		A
Spectrum:	FS	A

Instrument Serial Number:		2559224
Microphone Serial Number:		2556234
Input:		Top Socket
Windscreen Correction:		UA-1650
Sound Field Correction:		Diffuse-field

Calibration Time:		03/28/2008 20:03:38
Calibration Type:		External reference
Sensitivity:		49.93 mV/Pa

p4e

	Start time	End time	Elapsed time	Overload [%]	LAeq [dB]	LAFmax [dB]	LAFmin [dB]	LAeq [dB]	LAeq-LAeq [dB]
Value				0,00	51,7	71,0	35,0	53,7	2,0
Time	21:11:55	21:43:07	0:31:12						
Date	28-03-2008	28-03-2008							

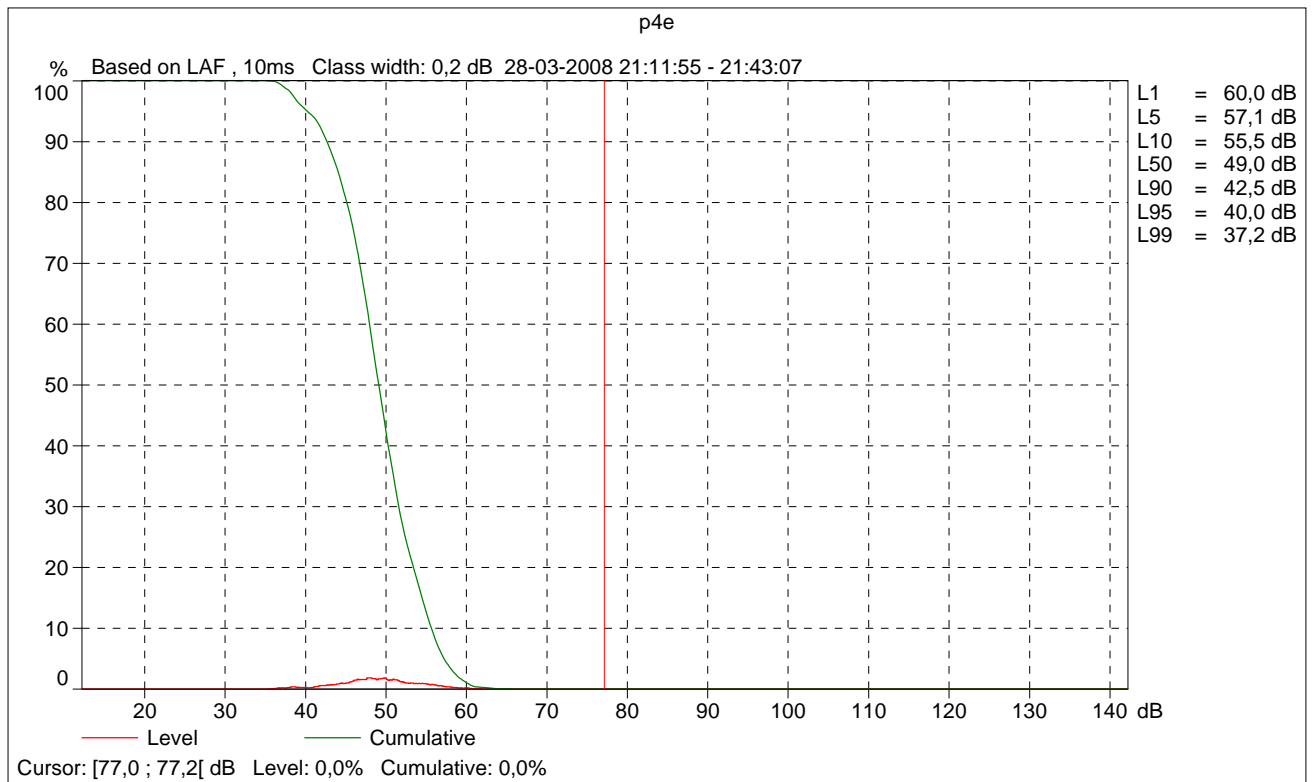
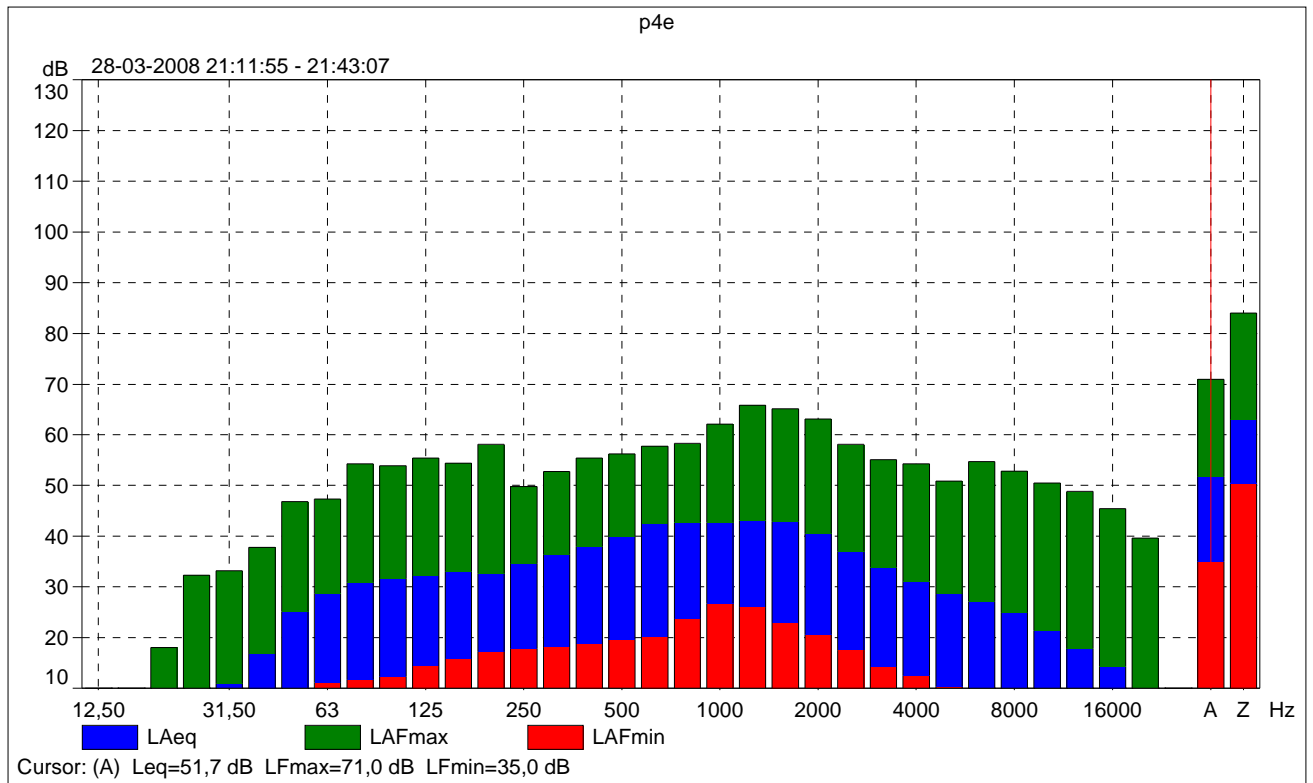
	LApeak [dB]	LAF50 [dB]	LAeq 12,5Hz [dB]	LAeq 16Hz [dB]	LAeq 20Hz [dB]	LAeq 25Hz [dB]	LAeq 31,5Hz [dB]	LAeq 40Hz [dB]
Value	87,1	49,0	-17,4	-10,2	-2,9	5,1	11,0	16,7
Time	21:22:55							
Date	28-03-2008							

	LAeq 50Hz [dB]	LAeq 63Hz [dB]	LAeq 80Hz [dB]	LAeq 100Hz [dB]	LAeq 125Hz [dB]	LAeq 160Hz [dB]	LAeq 200Hz [dB]	LAeq 250Hz [dB]
Value	25,2	28,8	30,9	31,6	32,1	33,0	32,7	34,5
Time								
Date								

	LAeq 315Hz [dB]	LAeq 400Hz [dB]	LAeq 500Hz [dB]	LAeq 630Hz [dB]	LAeq 800Hz [dB]	LAeq 1kHz [dB]	LAeq 1,25kHz [dB]
Value	36,4	38,0	39,9	42,4	42,8	42,7	43,1
Time							
Date							

	LAeq 1,6kHz [dB]	LAeq 2kHz [dB]	LAeq 2,5kHz [dB]	LAeq 3,15kHz [dB]	LAeq 4kHz [dB]	LAeq 5kHz [dB]	LAeq 6,3kHz [dB]
Value	42,9	40,5	37,0	33,9	31,1	28,5	27,1
Time							
Date							

	LAeq 8kHz [dB]	LAeq 10kHz [dB]	LAeq 12,5kHz [dB]	LAeq 16kHz [dB]	LAeq 20kHz [dB]
Value	24,9	21,4	17,8	14,4	9,4
Time					
Date					



2250

Instrument:		2250
Application:		BZ7223 Version 2.1
Start Time:		03/29/2008 04:05:22
End Time:		03/29/2008 04:37:27
Elapsed Time:		00:32:05
Bandwidth:		1/3-octave
Max Input Level:		140.92

	Time	Frequency
Broadband (excl. Peak):	FSI	AZ
Broadband Peak:		A
Spectrum:	FS	A

Instrument Serial Number:		2559224
Microphone Serial Number:		2556234
Input:		Top Socket
Windscreen Correction:		UA-1650
Sound Field Correction:		Diffuse-field

Calibration Time:		03/29/2008 02:22:17
Calibration Type:		External reference
Sensitivity:		50.14 mV/Pa

p4n

	Start time	End time	Elapsed time	Overload [%]	LAeq [dB]	LAFmax [dB]	LAFmin [dB]	LAeq [dB]	LAeq-LAeq [dB]
Value				0,00	44,4	64,0	32,1	46,6	2,2
Time	04:05:22	04:37:27	0:32:05						
Date	29-03-2008	29-03-2008							

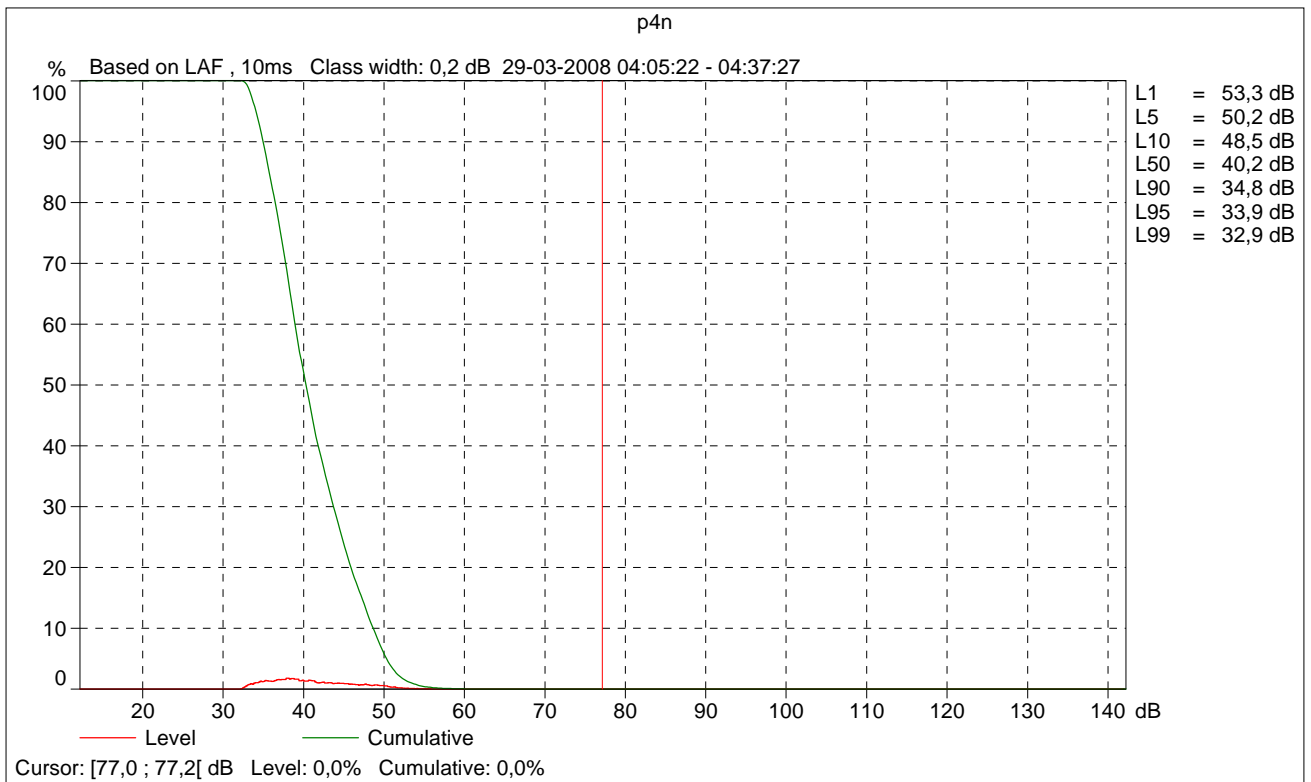
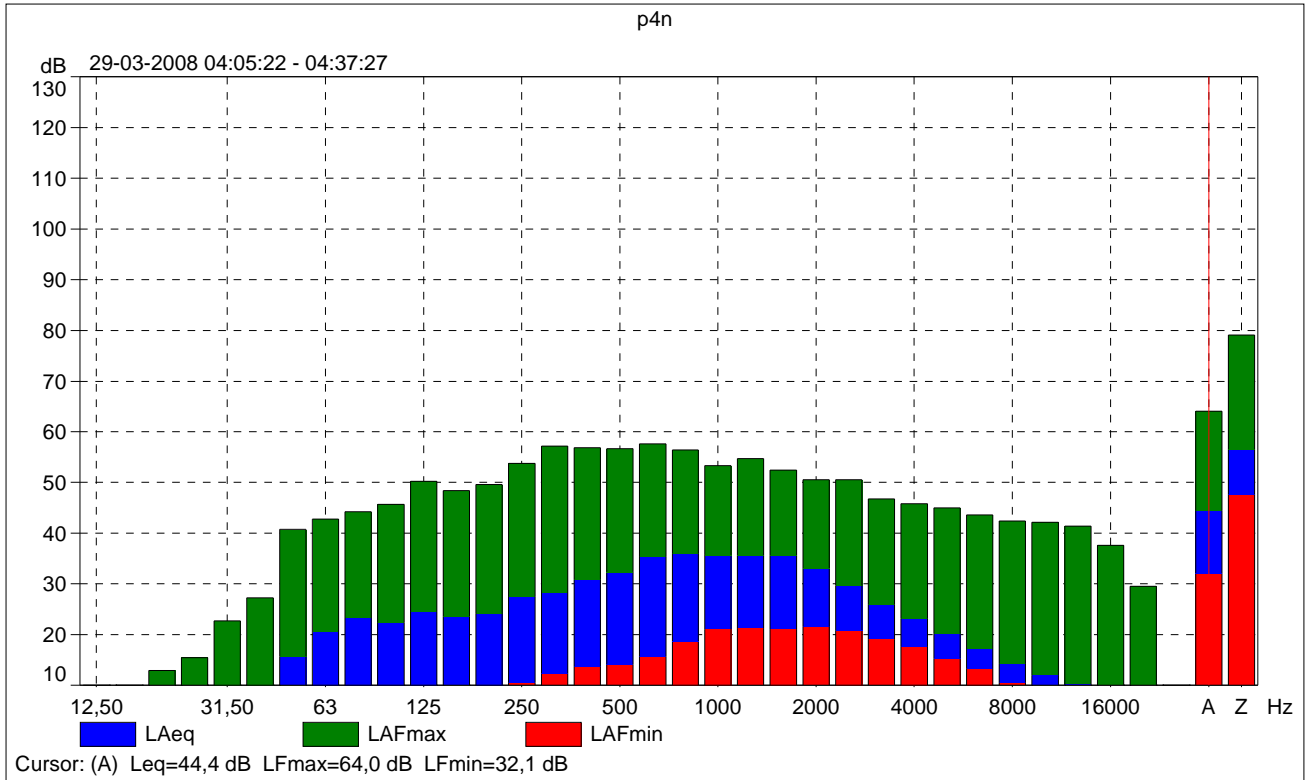
	LApeak [dB]	LAF50 [dB]	LAeq 12,5Hz [dB]	LAeq 16Hz [dB]	LAeq 20Hz [dB]	LAeq 25Hz [dB]	LAeq 31,5Hz [dB]	LAeq 40Hz [dB]
Value	83,1	40,2	-19,2	-12,4	-5,6	1,0	3,3	8,4
Time	04:37:23							
Date	29-03-2008							

	LAeq 50Hz [dB]	LAeq 63Hz [dB]	LAeq 80Hz [dB]	LAeq 100Hz [dB]	LAeq 125Hz [dB]	LAeq 160Hz [dB]	LAeq 200Hz [dB]	LAeq 250Hz [dB]
Value	15,7	20,5	23,3	22,3	24,4	23,6	24,1	27,4
Time								
Date								

	LAeq 315Hz [dB]	LAeq 400Hz [dB]	LAeq 500Hz [dB]	LAeq 630Hz [dB]	LAeq 800Hz [dB]	LAeq 1kHz [dB]	LAeq 1,25kHz [dB]
Value	28,2	30,8	32,4	35,3	35,9	35,7	35,6
Time							
Date							

	LAeq 1,6kHz [dB]	LAeq 2kHz [dB]	LAeq 2,5kHz [dB]	LAeq 3,15kHz [dB]	LAeq 4kHz [dB]	LAeq 5kHz [dB]	LAeq 6,3kHz [dB]
Value	35,6	33,1	29,7	25,9	23,1	20,2	17,1
Time							
Date							

	LAeq 8kHz [dB]	LAeq 10kHz [dB]	LAeq 12,5kHz [dB]	LAeq 16kHz [dB]	LAeq 20kHz [dB]
Value	14,3	12,0	10,2	8,4	6,6
Time					
Date					



2250

Instrument:		2250
Application:		BZ7223 Version 2.1
Start Time:		03/28/2008 18:59:55
End Time:		03/28/2008 19:31:01
Elapsed Time:		00:30:53
Bandwidth:		1/3-octave
Max Input Level:		140.96

	Time	Frequency
Broadband (excl. Peak):	FSI	AZ
Broadband Peak:		A
Spectrum:	FS	A

Instrument Serial Number:		2559224
Microphone Serial Number:		2556234
Input:		Top Socket
Windscreen Correction:		UA-1650
Sound Field Correction:		Diffuse-field

Calibration Time:		03/28/2008 16:48:01
Calibration Type:		External reference
Sensitivity:		49.90 mV/Pa

p5d

	Start time	End time	Elapsed time	Overload [%]	LAeq [dB]	LAFmax [dB]	LAFmin [dB]	LAeq [dB]	LAeq-LAeq [dB]
Value				0,00	58,9	86,2	49,8	60,7	1,8
Time	18:59:55	19:31:01	0:30:53						
Date	28-03-2008	28-03-2008							

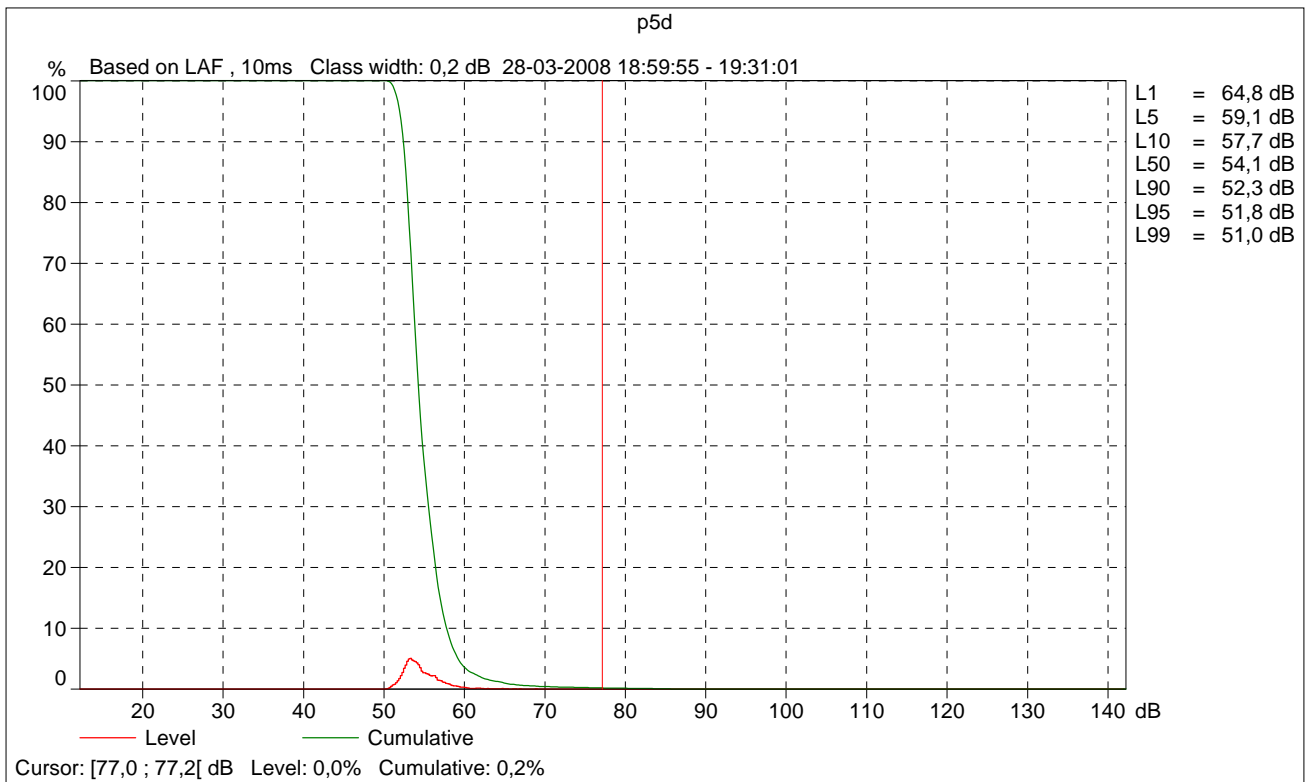
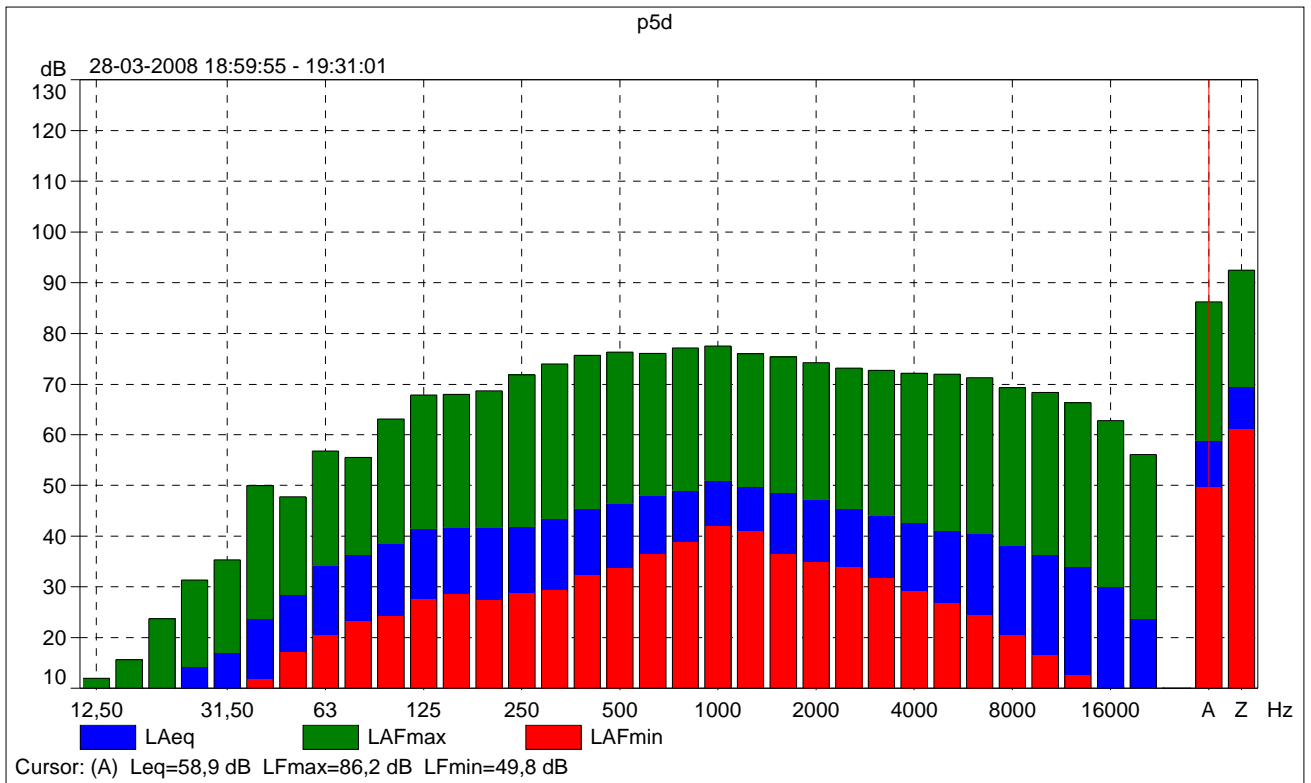
	LApeak [dB]	LAF50 [dB]	LAeq 12,5Hz [dB]	LAeq 16Hz [dB]	LAeq 20Hz [dB]	LAeq 25Hz [dB]	LAeq 31,5Hz [dB]	LAeq 40Hz [dB]
Value	98,4	54,1	-9,1	-1,1	7,6	14,1	17,0	23,6
Time	19:19:40							
Date	28-03-2008							

	LAeq 50Hz [dB]	LAeq 63Hz [dB]	LAeq 80Hz [dB]	LAeq 100Hz [dB]	LAeq 125Hz [dB]	LAeq 160Hz [dB]	LAeq 200Hz [dB]	LAeq 250Hz [dB]
Value	28,4	34,2	36,3	38,4	41,6	41,7	41,8	41,8
Time								
Date								

	LAeq 315Hz [dB]	LAeq 400Hz [dB]	LAeq 500Hz [dB]	LAeq 630Hz [dB]	LAeq 800Hz [dB]	LAeq 1kHz [dB]	LAeq 1,25kHz [dB]
Value	43,5	45,5	46,5	48,0	49,1	51,0	49,7
Time							
Date							

	LAeq 1,6kHz [dB]	LAeq 2kHz [dB]	LAeq 2,5kHz [dB]	LAeq 3,15kHz [dB]	LAeq 4kHz [dB]	LAeq 5kHz [dB]	LAeq 6,3kHz [dB]
Value	48,5	47,3	45,6	44,1	42,6	41,2	40,6
Time							
Date							

	LAeq 8kHz [dB]	LAeq 10kHz [dB]	LAeq 12,5kHz [dB]	LAeq 16kHz [dB]	LAeq 20kHz [dB]
Value	38,1	36,4	33,9	30,2	23,7
Time					
Date					



2250

Instrument:		2250
Application:		BZ7223 Version 2.1
Start Time:		03/28/2008 21:46:08
End Time:		03/28/2008 22:18:19
Elapsed Time:		00:32:11
Bandwidth:		1/3-octave
Max Input Level:		140.96

	Time	Frequency
Broadband (excl. Peak):	FSI	AZ
Broadband Peak:		A
Spectrum:	FS	A

Instrument Serial Number:		2559224
Microphone Serial Number:		2556234
Input:		Top Socket
Windscreen Correction:		UA-1650
Sound Field Correction:		Diffuse-field

Calibration Time:		03/28/2008 20:03:38
Calibration Type:		External reference
Sensitivity:		49.93 mV/Pa

p5e

	Start time	End time	Elapsed time	Overload [%]	LAeq [dB]	LAFmax [dB]	LAFmin [dB]	LAeq [dB]	LAeq-LAeq [dB]
Value				0,00	51,6	63,6	46,5	52,5	0,9
Time	21:46:08	22:18:19	0:32:11						
Date	28-03-2008	28-03-2008							

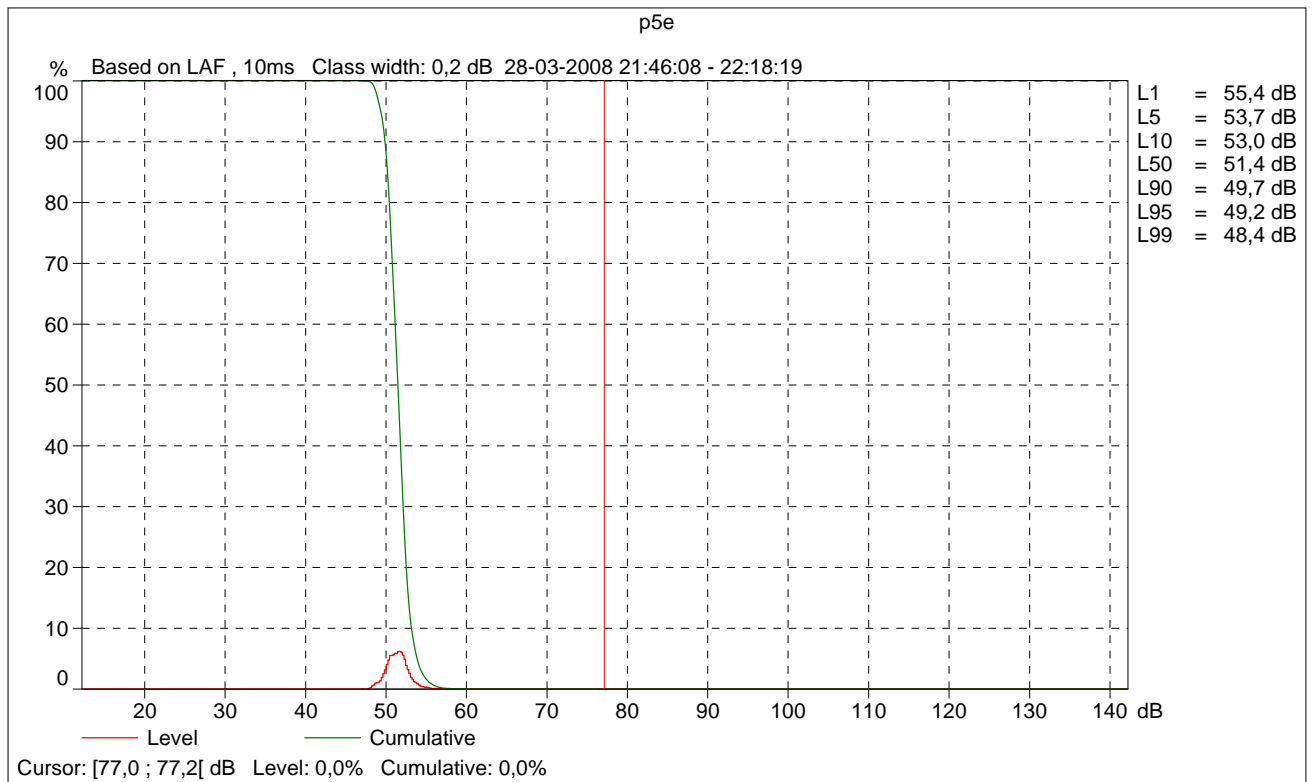
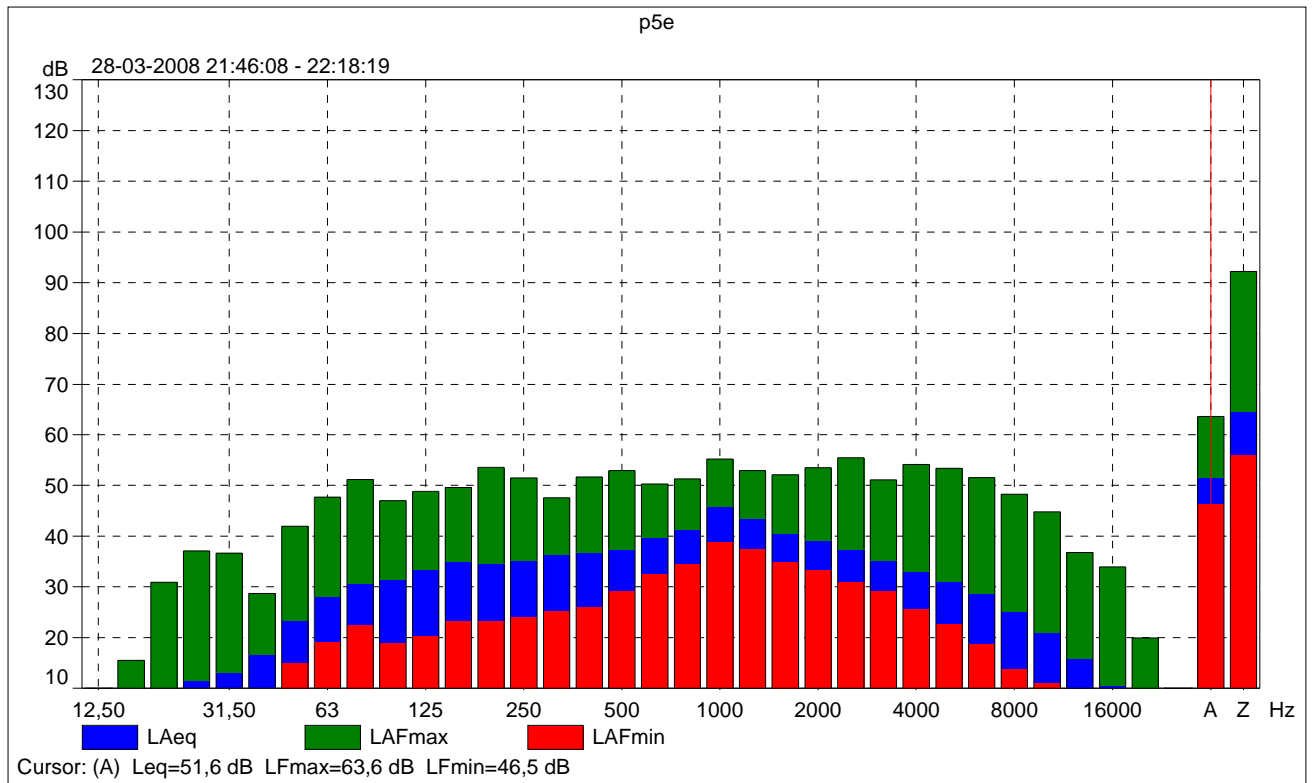
	LApeak [dB]	LAF50 [dB]	LAeq 12,5Hz [dB]	LAeq 16Hz [dB]	LAeq 20Hz [dB]	LAeq 25Hz [dB]	LAeq 31,5Hz [dB]	LAeq 40Hz [dB]
Value	86,3	51,4	-13,4	-5,1	5,8	11,5	13,1	16,5
Time	22:18:13							
Date	28-03-2008							

	LAeq 50Hz [dB]	LAeq 63Hz [dB]	LAeq 80Hz [dB]	LAeq 100Hz [dB]	LAeq 125Hz [dB]	LAeq 160Hz [dB]	LAeq 200Hz [dB]	LAeq 250Hz [dB]
Value	23,3	27,9	30,7	31,6	33,5	34,9	34,7	35,2
Time								
Date								

	LAeq 315Hz [dB]	LAeq 400Hz [dB]	LAeq 500Hz [dB]	LAeq 630Hz [dB]	LAeq 800Hz [dB]	LAeq 1kHz [dB]	LAeq 1,25kHz [dB]
Value	36,4	36,7	37,4	39,7	41,3	45,8	43,6
Time							
Date							

	LAeq 1,6kHz [dB]	LAeq 2kHz [dB]	LAeq 2,5kHz [dB]	LAeq 3,15kHz [dB]	LAeq 4kHz [dB]	LAeq 5kHz [dB]	LAeq 6,3kHz [dB]
Value	40,5	39,1	37,5	35,2	33,1	31,0	28,6
Time							
Date							

	LAeq 8kHz [dB]	LAeq 10kHz [dB]	LAeq 12,5kHz [dB]	LAeq 16kHz [dB]	LAeq 20kHz [dB]
Value	25,0	20,9	15,7	10,5	6,8
Time					
Date					



2250

Instrument:		2250
Application:		BZ7223 Version 2.1
Start Time:		03/29/2008 04:40:50
End Time:		03/29/2008 05:11:05
Elapsed Time:		00:30:15
Bandwidth:		1/3-octave
Max Input Level:		140.92

	Time	Frequency
Broadband (excl. Peak):	FSI	AZ
Broadband Peak:		A
Spectrum:	FS	A

Instrument Serial Number:		2559224
Microphone Serial Number:		2556234
Input:		Top Socket
Windscreen Correction:		UA-1650
Sound Field Correction:		Diffuse-field

Calibration Time:		03/29/2008 02:22:17
Calibration Type:		External reference
Sensitivity:		50.14 mV/Pa

p5n

	Start time	End time	Elapsed time	Overload [%]	LAeq [dB]	LAFmax [dB]	LAFmin [dB]	LAeq [dB]	LAeq-LAeq [dB]
Value				0,00	45,4	70,5	32,6	48,8	3,4
Time	04:40:50	05:11:05	0:30:15						
Date	29-03-2008	29-03-2008							

	LApeak [dB]	LAF50 [dB]	LAeq 12,5Hz [dB]	LAeq 16Hz [dB]	LAeq 20Hz [dB]	LAeq 25Hz [dB]	LAeq 31,5Hz [dB]	LAeq 40Hz [dB]
Value	86,8	41,7	-18,6	-9,9	-5,8	1,2	4,2	8,2
Time	05:06:49							
Date	29-03-2008							

	LAeq 50Hz [dB]	LAeq 63Hz [dB]	LAeq 80Hz [dB]	LAeq 100Hz [dB]	LAeq 125Hz [dB]	LAeq 160Hz [dB]	LAeq 200Hz [dB]	LAeq 250Hz [dB]
Value	14,6	22,5	22,6	25,2	24,8	24,4	27,0	28,6
Time								
Date								

	LAeq 315Hz [dB]	LAeq 400Hz [dB]	LAeq 500Hz [dB]	LAeq 630Hz [dB]	LAeq 800Hz [dB]	LAeq 1kHz [dB]	LAeq 1,25kHz [dB]
Value	30,9	33,4	33,9	35,5	36,0	36,1	36,5
Time							
Date							

	LAeq 1,6kHz [dB]	LAeq 2kHz [dB]	LAeq 2,5kHz [dB]	LAeq 3,15kHz [dB]	LAeq 4kHz [dB]	LAeq 5kHz [dB]	LAeq 6,3kHz [dB]
Value	36,9	34,7	31,2	28,3	25,8	23,1	20,4
Time							
Date							

	LAeq 8kHz [dB]	LAeq 10kHz [dB]	LAeq 12,5kHz [dB]	LAeq 16kHz [dB]	LAeq 20kHz [dB]
Value	16,5	14,3	11,1	8,8	6,7
Time					
Date					

